

WAAS CH 86224 W19A	APP CRS 191°	Rwy Idg TDZE 265 Apt Elev 265	6008
--	------------------------	---	-------------

RNAV (GPS) RWY 19

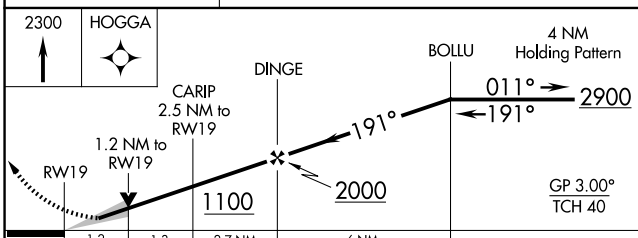
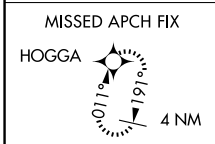
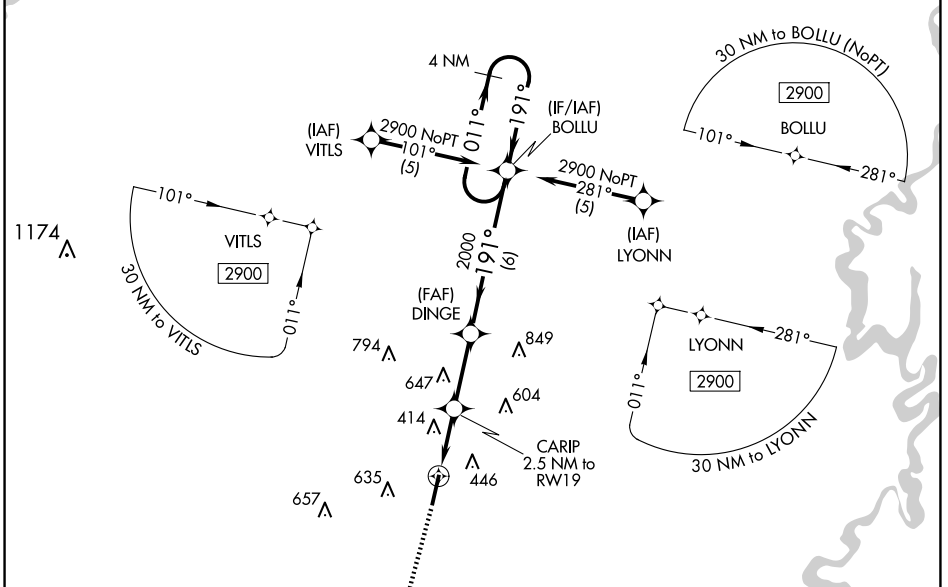
SEARCY RGNL (SRC)

RNP APCH-GPS

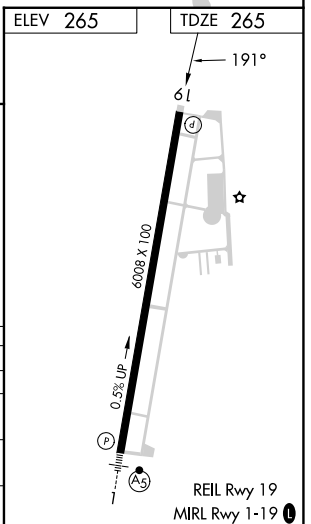
When local altimeter setting not received, use Bill and Hillary Clinton Nil/Adams Fld altimeter setting: increase LPV DA to 604 feet and all visibilities $\frac{1}{4}$ SM; increase all MDAs 100 feet and LNAV and Circling Cat C visibility $\frac{1}{4}$ SM. VDP NA with Bill and Hillary Clinton Nil/Adams Fld altimeter setting. Circling NA for Cats B and C west of Rwy 1-19.

MISSED APPROACH:
Climb to 2300 direct
HOGGA and hold.

AWOS-3PT 128.325	LITTLE ROCK APP CON 119.75 291.775	CLNC DEL 119.75	UNICOM 122.7 (CTAF)
----------------------------	--	---------------------------	-------------------------------



CATEGORY	A	B	C	D
LPV DA	515- $\frac{3}{4}$		250 (300- $\frac{3}{4}$)	NA
LNAV/VNAV DA	NA			
LNAV MDA	680-1	415 (500-1)	680-1 $\frac{1}{8}$ 415 (500-1 $\frac{1}{8}$)	NA
CIRCLING	760-1	496 (500-1)	780-1 $\frac{1}{2}$ 515 (600-1 $\frac{1}{2}$)	NA



SC-1, 23 JAN 2025 to 20 FEB 2025

SC-1, 23 JAN 2025 to 20 FEB 2025