

VOR/DME MCW <b>114.9</b> Chan <b>96</b>	APP CRS <b>297°</b>	Rwy Idg TDZE Apt Elev <b>N/A</b> <b>N/A</b> <b>1229</b>
---	------------------------	--

# VOR-A

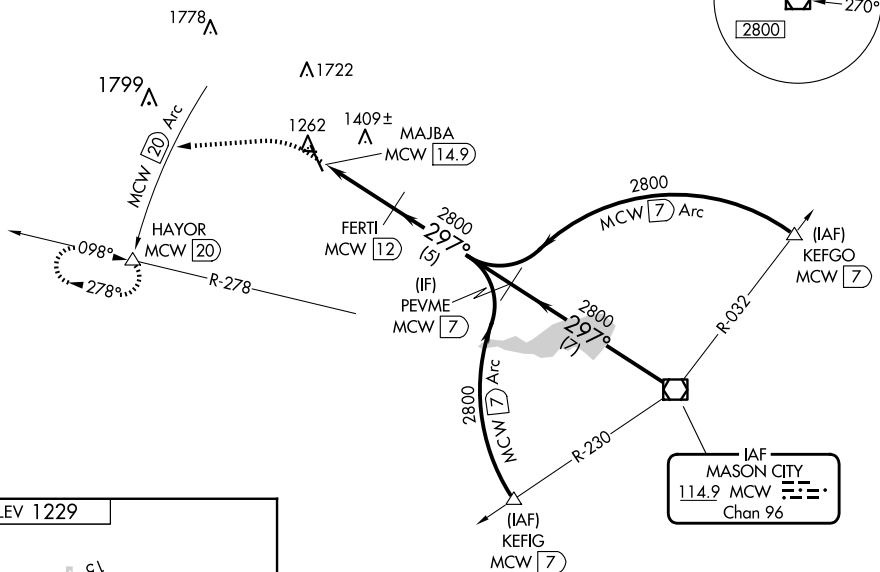
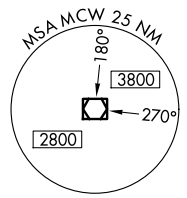
FOREST CITY MUNI/TRIMBLE FLD (FXY)

DME required.

When local altimeter setting not received use Mason City altimeter setting and increase all MDA 40 feet. Circling to Rwy 9, 27 33 NA at night.

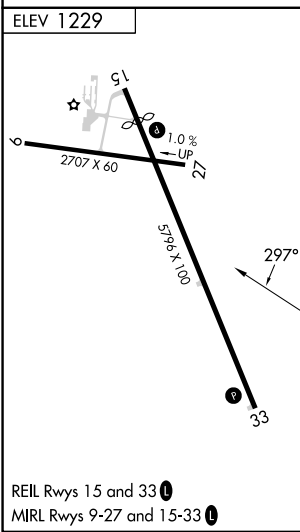
MISSED APPROACH: Climb to 3000 on heading 260° to MCW 20 DME Arc and on MCW 20 DME Arc counterclockwise to HAYOR/20 DME and hold.

AWOS-3 <b>123.925</b>	MINNEAPOLIS CENTER <b>127.3 257.675</b>	UNICOM <b>122.8 (CTAF)</b>
--------------------------	--	-------------------------------



NC-3, 23 JAN 2025 to 20 FEB 2025

NC-3, 23 JAN 2025 to 20 FEB 2025



Procedure NA for arrivals on MCW VOR/DME airway radials 278 CW 343.

3000	MCW 20 Arc counter-clockwise	HAYOR	FERTI MCW 12	PEVME MCW 7	MCW VOR/DME
↑		△			
hdg 260°			MAJBA MCW 14.9		
			2800	2800	297° 2800
			2.9 NM	5 NM	7 NM
CATEGORY	A	B	C	D	
CIRCLING	1680-1 451 (500-1)	1760-1 531 (600-1)			NA