

WAAS CH <b>58338</b> <b>W18A</b>	APP CRS <b>181°</b>	Rwy Idg <b>3202</b> TDZE <b>548</b> Apt Elev <b>551</b>
--	------------------------	---

# RNAV (GPS) RWY 18

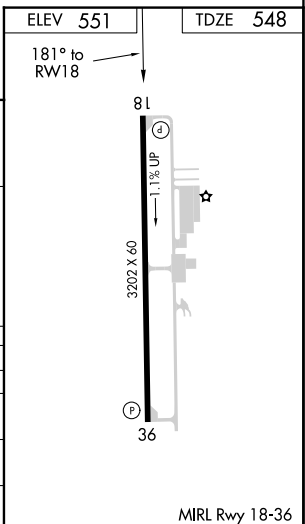
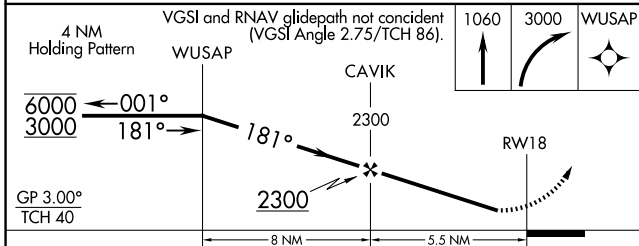
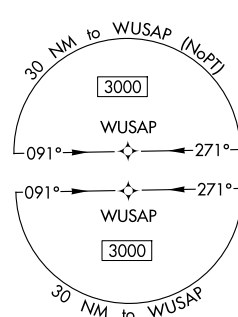
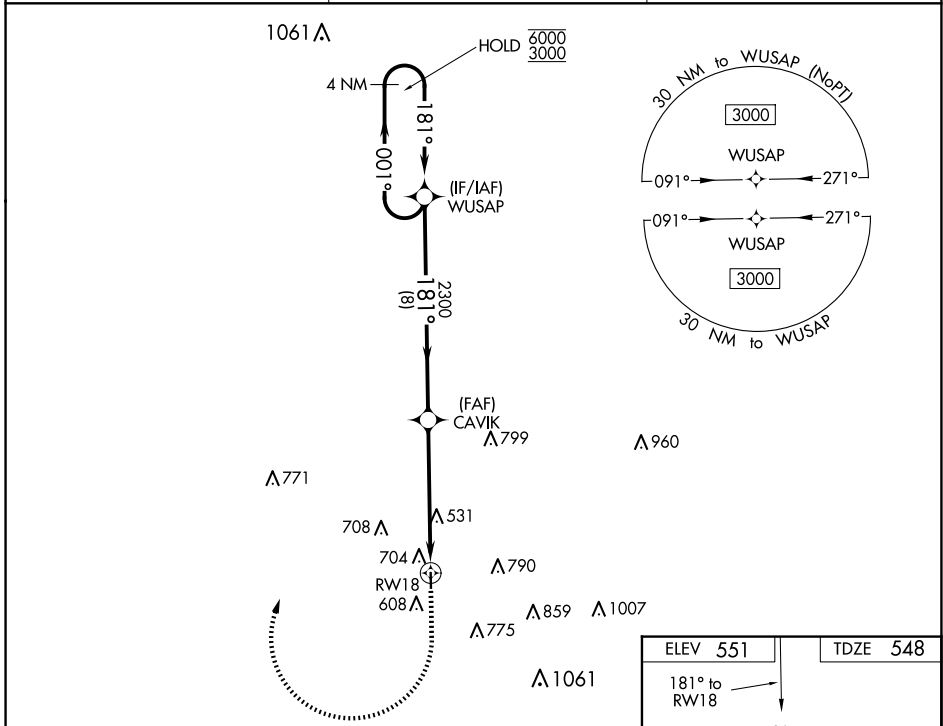
HOLLY SPRINGS-MARSHALL COUNTY (M41)

RNP APCH-GPS.

**▽** Rwy 18 helicopter visibility reduction below  $\frac{3}{4}$  SM NA. Baro-VNAV NA. Use Olive Branch altimeter setting; when not received, use Oxford altimeter setting and increase LPV DA to 870, and all visibilities  $\frac{1}{8}$  SM; increase LNAV/VNAV DA to 957 and all MDAs 20 feet.

**▲NA** MISSED APPROACH: Climb to 1060 then climbing right turn to 3000 direct WUSAP and hold.

OLV AWOS-3 <b>119.925</b>	MEMPHIS APP CON <b>125.8 338.3</b>	UNICOM <b>122.8</b> (CTAF)
------------------------------	---------------------------------------	-------------------------------



CATEGORY	A	B	C	D
LPV DA	858-1 $\frac{1}{8}$	310 (400-1 $\frac{1}{8}$ )		NA
LNAV/VNAV DA	945-1 $\frac{1}{2}$	397 (400-1 $\frac{1}{2}$ )		NA
LNAV MDA	1020-1	472 (500-1)	1020-1 $\frac{3}{8}$ 472 (500-1 $\frac{3}{8}$ )	NA
<b>C</b> CIRCLING	1080-1 529 (600-1)	1100-1 549 (600-1)	1260-2 709 (800-2)	NA

MIRL Rwy 18-36

SC-4, 23 JAN 2025 to 20 FEB 2025

SC-4, 23 JAN 2025 to 20 FEB 2025