

WAAS CH 53740 W20A	APP CRS 201°	Rwy Idg TDZE 117 Apt Elev 117	4700
--	------------------------	---	-------------

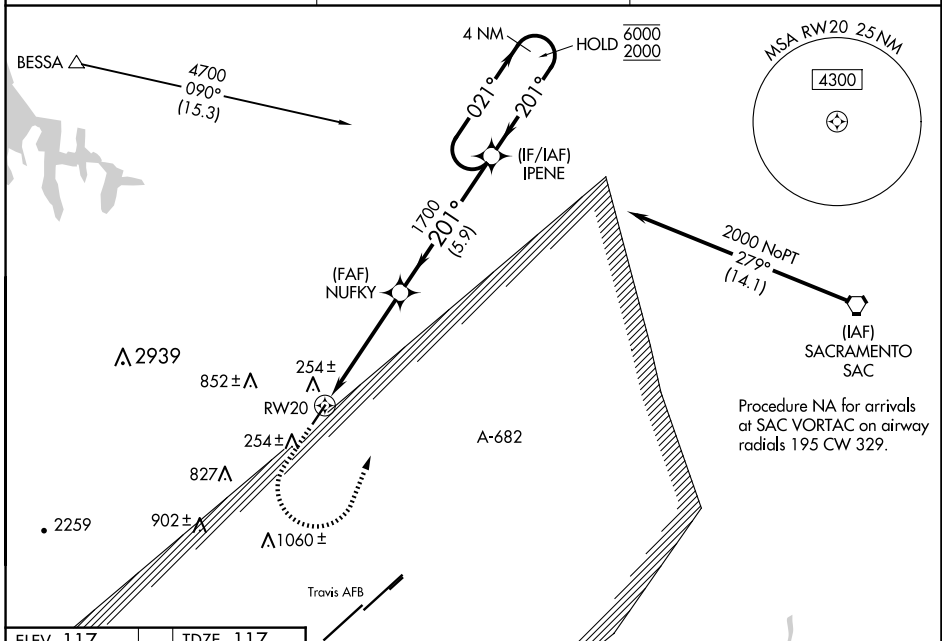
RNAV (GPS) RWY 20

NUT TREE (VCB)

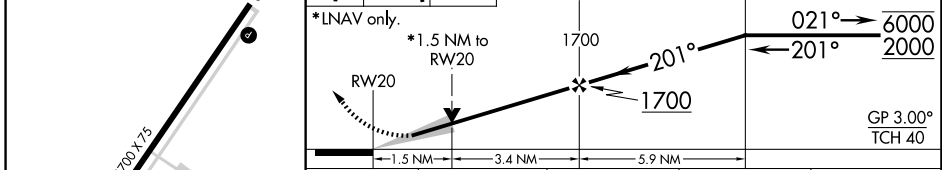
RNP APCH. MISSED APPROACH: (Do not exceed 220K until IPENE) Climb to 580 then climbing left turn to 2100 direct IPENE and hold. # Missed approach requires minimum climb of 229 feet per NM to 1300.

▼ Circling NA west of Rwy 2-20. Circling Rwy 2 NA at night.
▲ For uncompensated Baro-VNAV systems, LNAV/VNAV NA below -3°C or above 54°C.

ASOS 134.75	TRAVIS APP CON 128.4 281.45	CTAF 122.85 ●
-----------------------	---------------------------------------	--



ELEV 117	TDZE 117	580	2100	IPENE	VGSI and RNAV glidepath not coincident (VGSI Angle 3.75/TCH 27).	IPENE	4 NM Holding Pattern
----------	----------	-----	------	-------	--	-------	----------------------



CATEGORY	A	B	C	D
LPV DA#		367- ³ / ₄	250 (300- ³ / ₄)	
LPV DA		384- ⁷ / ₈	267 (300- ⁷ / ₈)	
LNAV/VNAV DA		614-1 ³ / ₈	497 (500-1 ³ / ₈)	
LNAV MDA	720-1	603 (700-1)	720-1 ³ / ₄	603 (700-1 ³ / ₄)
■ CIRCLING	720-1	603 (700-1)	960-2 ¹ / ₂ 843 (900-2 ¹ / ₂)	1480-3 1363 (1400-3)

SW-2, 23 JAN 2025 to 20 FEB 2025

SW-2, 23 JAN 2025 to 20 FEB 2025