

WAAS CH 99416 W02A	APP CRS 020°	Rwy Idg TDZE Apt Elev	5002 991 996
--	------------------------	-----------------------------	---

RNAV (GPS) RWY 2

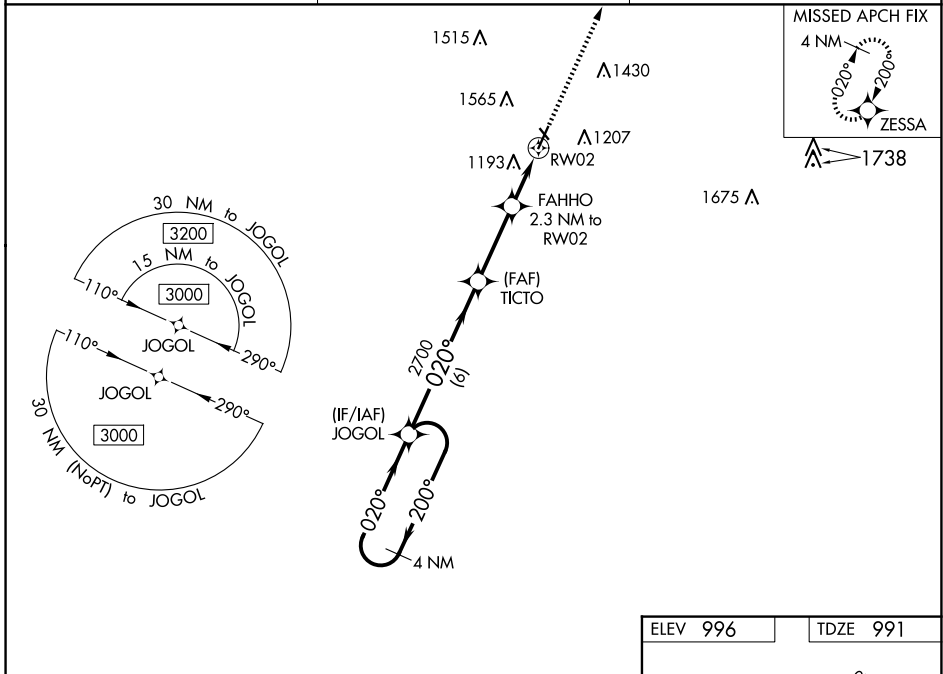
SCHENCK FLD (ICL)

RNP APCH - GPS.

⚠ For uncompensated Baro-VNAV systems, LNAV/VNAV NA below -16°C (4°F) or above 54°C (130°F). Circling NA west of Rwy 2-20. Circling NA to Rwsy 13 and 31. Rwy 2 helicopter visibility reduction below ¼ SM NA.

MISSED APPROACH: Climb to 3000 direct ZESSA and hold.

AWOS-3 132.025	MINNEAPOLIS CENTER 119.6 290.4	UNICOM 122.8 (CTAF) 📻
--------------------------	--	--



NC-3, 23 JAN 2025 to 20 FEB 2025

NC-3, 23 JAN 2025 to 20 FEB 2025

4 NM Holding Pattern		JOGOL		VGSi and RNAV glidepath not coincident (VGSi Angle 3.00/TCH 28).		3000	ZESSA
3000 ← 200°		→ 020°		020°		2700	
GP 3.00°		TICTO		FAHHO 2.3 NM to RWY 2		1760	
TCH 40		6 NM		2.9 NM		0.9 NM	1.4 NM
CATEGORY	A	B	C	D			
LPV DA	1241-1		250 (300-1)				
LNAV/VNAV DA	1489-1 3/8		498 (500-1 3/8)				
LNAV MDA	1460-1	469 (500-1)	1460-1 3/8	469 (500-1 3/8)			
CIRCLING	1540-1	1720-1	1780-2 1/4	1780-2 1/2			
	544 (600-1)	724 (800-1)	784 (800-2 1/4)	784 (800-2 1/2)			

