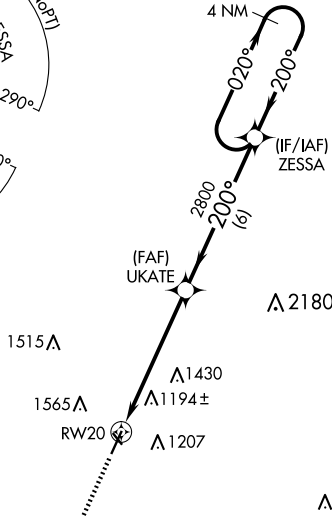
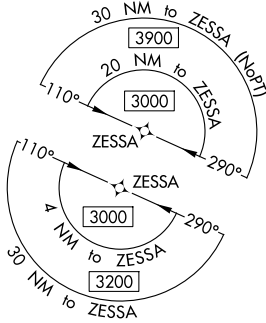


WAAS CH 90541 W20A	APP CRS 200°	Rwy Idg TDZE Apt Elev	5002 995 996
--	------------------------	-----------------------------	---

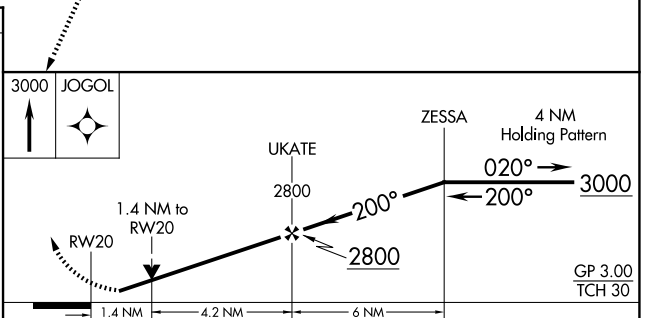
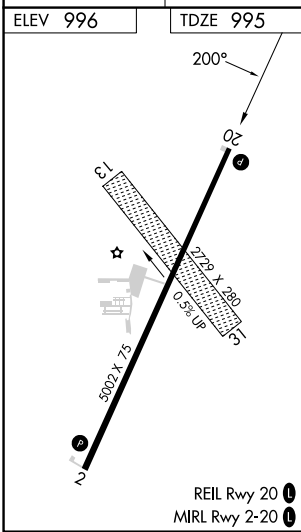
RNAV (GPS) RWY 20

SCHENCK FLD (ICL)

RNP APCH - GPS.		MISSED APPROACH: Climb to 3000 direct JOGOL and hold.
<p>▼ For uncompensated Baro-VNAV systems, LNAV/VNAV NA below -16°C (4°F) or above 54°C (130°F). Circling NA west of Rwy 2-20. Circling NA to Rwys 13 and 31. Rwy 20 helicopter visibility reduction below 3/4 SM NA.</p>		
AWOS-3 132.025	MINNEAPOLIS CENTER 119.6 290.4	UNICOM 122.8 (CTAF) 0



MISSED APCH FIX



CATEGORY	A	B	C	D
LPV DA	1261-1		266 (300-1)	
LNAV/VNAV DA	1489-1 3/8		494 (500-1 3/8)	
LNAV MDA	1460-1 465 (500-1)		1460-1 3/8 465 (500-1 3/8)	
<input checked="" type="checkbox"/> CIRCLING	1540-1 544 (600-1)	1720-1 724 (800-1)	1780-2 1/4 784 (800-2 1/4)	1780-2 1/2 784 (800-2 1/2)

NC-3, 23 JAN 2025 to 20 FEB 2025

NC-3, 23 JAN 2025 to 20 FEB 2025