

WAAS CH <b>49140</b> <b>W35A</b>	APP CRS <b>354°</b>	Rwy Idg TDZE <b>112</b> Apt Elev <b>112</b>	<b>6006</b>
--	------------------------	---	-------------

# RNAV (GPS) RWY 35

BROOKS COUNTY (BKS)

**⚠** For uncompensated Baro-VNAV systems, LNAV/VNAV NA below -15°C (5°F) or above 54°C (130°F). Circling Rwy 14 NA at night. DME/DME RNP-0.3 NA.

MISSED APPROACH: Climb to 3000 direct SALUM and hold.

AWOS-3PT  
**118.125**

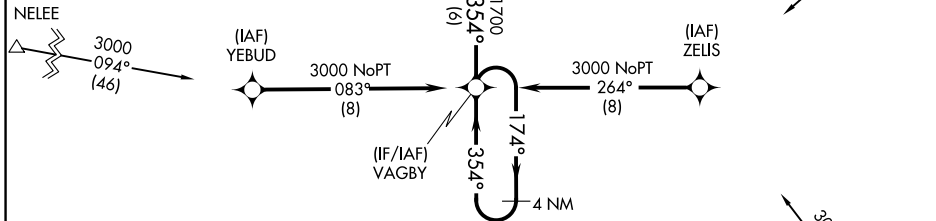
KINGSVILLE APP CON \*  
**119.9 290.45**

UNICOM  
**122.8 (CTAF) 0**

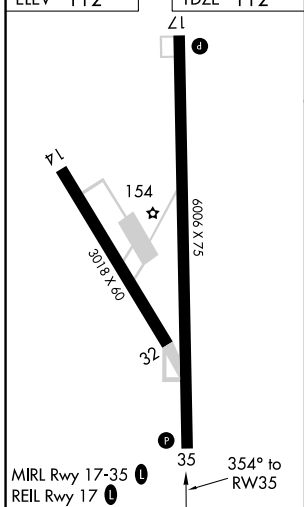
MISSED APCH FIX



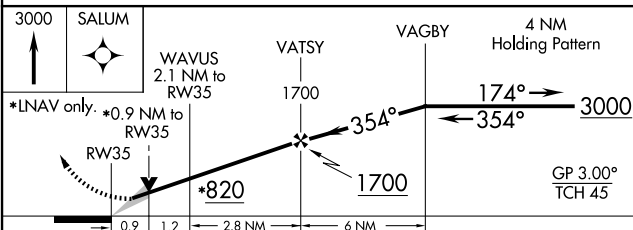
Procedure NA for arrivals at NELEE via V17 northwest bound.



ELEV 112 TDZE 112



Procedure NA for arrivals at JIMIE on V20 southwest bound.



CATEGORY	A	B	C	D
LPV DA		362-1	250 (300-1)	
LNAV/VNAV DA		362-1	250 (300-1)	
LNAV MDA		440-1	328 (400-1)	
<b>CIRCLING</b>	580-1 468 (500-1)	680-1 568 (600-1)	940-2½ 828 (900-2½)	940-2¾ 828 (900-2¾)

SC-3, 23 JAN 2025 to 20 FEB 2025

SC-3, 23 JAN 2025 to 20 FEB 2025