

NDB EOE 278	APP CRS 213°	Rwy Idg 4001
		TDZE 570
		Apt Elev 570

NDB RWY 22

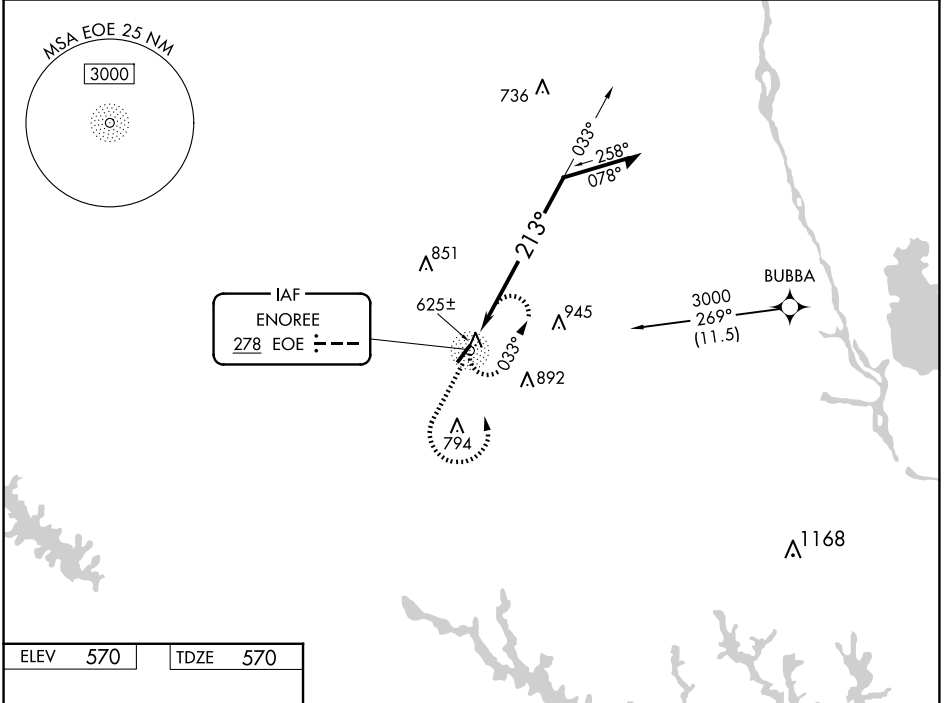
NEWBERRY COUNTY (EOE)

RNAV 1 - GPS or RADAR required for procedure entry.

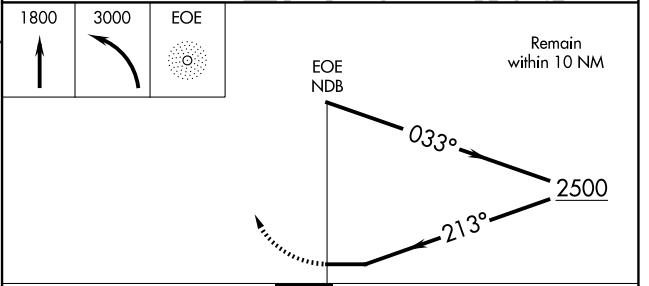
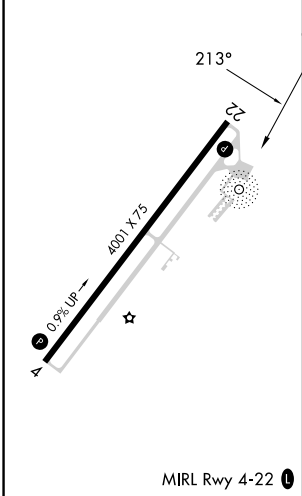
▼ Rwy 22 helicopter visibility reduction below 3/4 SM NA. When local altimeter setting not received, use Greenwood altimeter setting and increase all MDAs 80 feet.

MISSED APPROACH: Climb to 1800 then climbing left turn to 3000 direct EOE NDB and hold.

AWOS-3 124.275	COLUMBIA APP CON 133.4 285.6	UNICOM 122.8 (CTAF)
--------------------------	----------------------------------------	-------------------------------



ELEV 570	TDZE 570
----------	----------



CATEGORY	A	B	C	D
S-22	1100-1	530 (600-1)	NA	
C CIRCLING	1100-1 530 (600-1)	1160-1 590 (600-1)	NA	

SE-2, 23 JAN 2025 to 20 FEB 2025

SE-2, 23 JAN 2025 to 20 FEB 2025