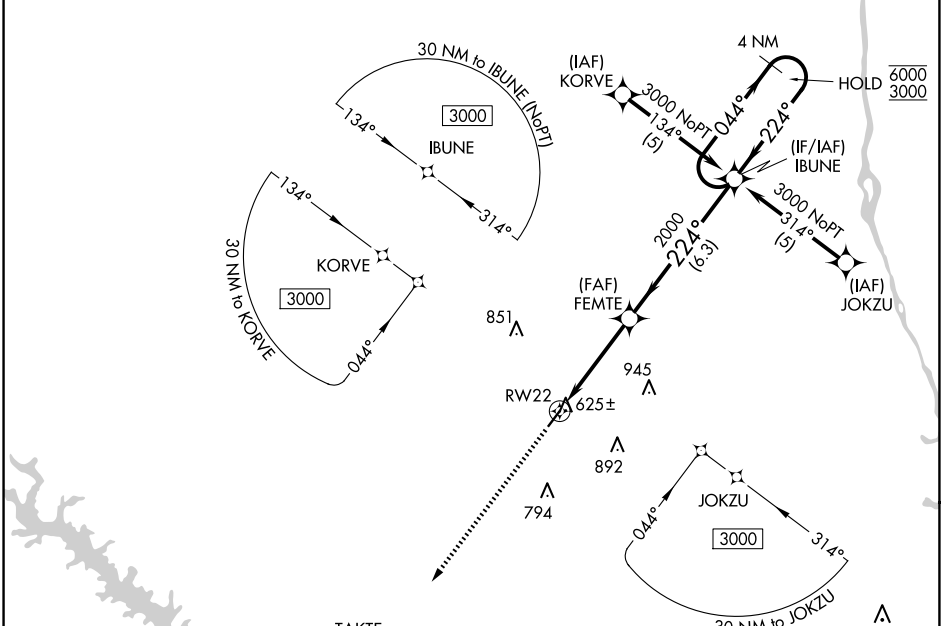


APP CRS	Rwy Idg	4001
224°	TDZE	570
	Apt Elev	570

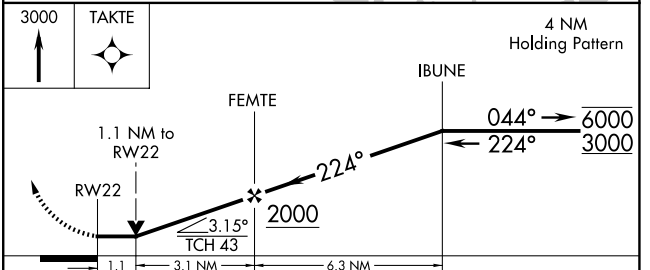
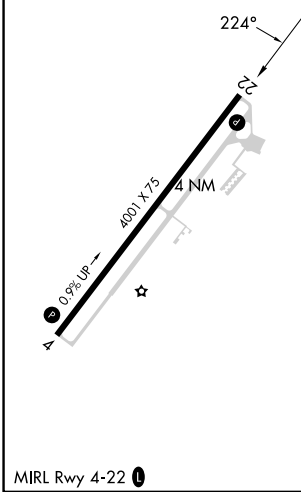
RNAV (GPS) RWY 22

NEWBERRY COUNTY (EOE)

RNP APCH - GPS		MISSED APPROACH: Climb to 3000 direct TAKTE and hold.
<p>⚠ VDP NA when using GRD altimeter setting. Rwy 22 helicopter visibility reduction below 3/4 SM NA. When local altimeter setting not received, use GRD altimeter setting and increase all MDA 80 feet.</p>		
AWOS-3 124.275	COLUMBIA APP CON 133.4 285.6	UNICOM 122.8 (CTAF) 0



ELEV 570	TDZE 570
----------	----------



CATEGORY	A	B	C	D
LNAV MDA	980-1	410 (500-1)	NA	
CIRCLING	1080-1 510 (600-1)	1160-1 590 (600-1)	NA	

SE-2, 23 JAN 2025 to 20 FEB 2025

SE-2, 23 JAN 2025 to 20 FEB 2025