

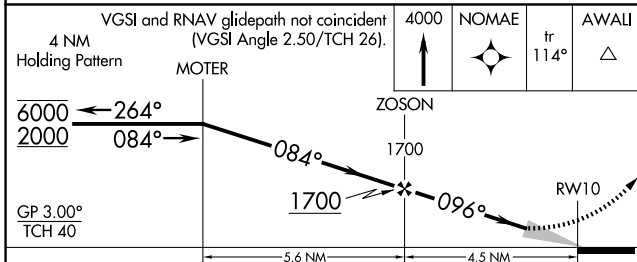
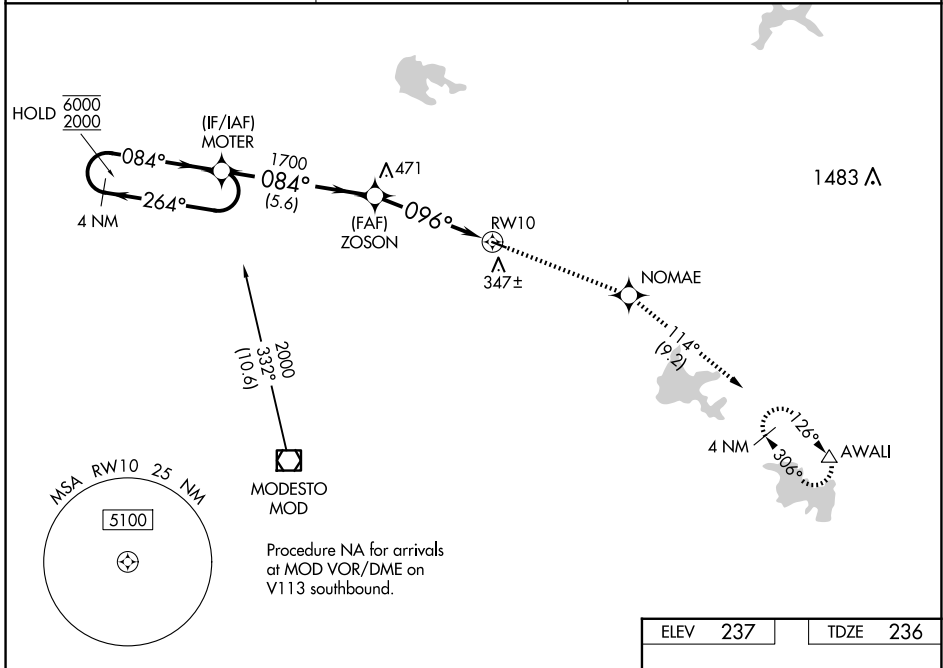
WAAS CH 42524 W10A	APP CRS 096°	Rwy Idg TDZE Apt Elev	3013 236 237
--	------------------------	-----------------------------	---

RNAV (GPS) RWY 10

OAKDALE (O27)

RNP APCH-GPS.	MISSED APPROACH: Climb to 4000 direct NOMAE and on track 114° to AWALI and hold, continue climb-in-hold to 4000.
<p>NA Baro-VNAV NA. Use Modesto altimeter setting; when not received, use Stockton Metro altimeter setting: increase LPV DA to 627 feet and all visibilities $\frac{1}{8}$ SM; increase LNAV/VNAV DA to 588 feet and all visibilities $\frac{1}{8}$ SM; increase all MDAs 40 feet and LNAV Cat C visibility $\frac{1}{8}$ SM.</p>	

MOD ASOS 127.7	NORCAL APP CON 125.1 363.2	UNICOM 122.8 (CTAF)
--------------------------	--------------------------------------	-------------------------------



ELEV 237	TDZE 236
----------	----------

REIL Rwy 10 and 28
MIRL Rwy 10-28

CATEGORY	A	B	C	D
LPV DA	593-1 357 (400-1)			NA
LNAV/VNAV DA	554- $\frac{7}{8}$ 318 (400- $\frac{7}{8}$)			NA
LNAV MDA	760-1	524 (600-1)	760-1 $\frac{1}{2}$ 524 (600-1 $\frac{1}{2}$)	NA
CIRCLING	760-1 523 (600-1)	820-1 583 (600-1)	920-2 683 (700-2)	NA

SW-2, 23 JAN 2025 to 20 FEB 2025

SW-2, 23 JAN 2025 to 20 FEB 2025