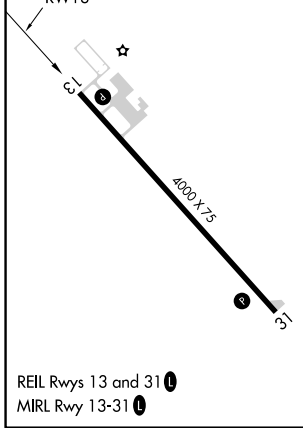
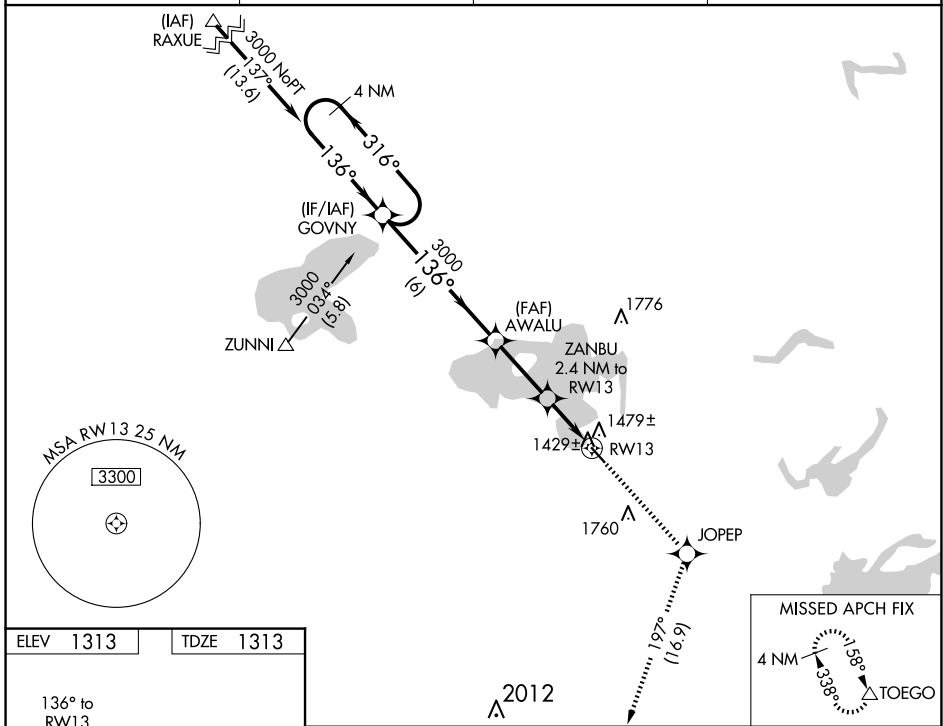


WAAS CH 69224 W13A	APP CRS 136°	Rwy Idg TDZE Apt Elev	4000 1313 1313
--	------------------------	-----------------------------	---

RNAV (GPS) RWY 13

ORR RGNL(ORB)

RNP APCH.		MISSED APPROACH: Climb to 3600 direct JOPEP and on track 197° to TOEGO and hold.	
<p>▼ Rwy 13 helicopter visibility reduction below ¼ SM NA. When local altimeter setting not received, use Cook altimeter setting; increase all MDA 40 feet and increase Circling visibility Cat C ¼ SM. VDP NA when using Cook altimeter setting.</p>		AWOS-3 118.325	MINNEAPOLIS CENTER 120.9 377.1
		GCO 121.725	UNICOM 122.8 (CTAF) 0



VGSI and descent angles not coincident (VGSI Angle 3.00/TCH 20).

4 NM Holding Pattern	GOVNY	AWALU	JOPEP	TOEGO
3000	316°	136°	3600	tr 197°
	136°	3000		
		ZANBU		
		3.00° TCH 40		
		2.4 NM to RWY13		
		1.2 NM to RWY13		
		2100		
		6 NM	2.8 NM	1.2
			1.2	

CATEGORY	A	B	C	D
LP MDA	1720-1	407 (500-1)	1720-1 1/8 407 (500-1 1/8)	NA
LNAV MDA	1760-1	447 (500-1)	1760-1 3/8 447 (500-1 3/8)	NA
CIRCLING	1920-1	607 (700-1)	2120-2 1/4 807 (900-2 1/4)	NA

NC-1, 23 JAN 2025 to 20 FEB 2025

NC-1, 23 JAN 2025 to 20 FEB 2025