

|  |                        |   |             |
|--|------------------------|---|-------------|
| WAAS<br>CH <b>86532</b><br><b>W33A</b> | APP CRS<br><b>332°</b> | Rwy Idg<br>TDZE <b>1125</b><br>Apt Elev <b>1127</b> | <b>3399</b> |
|--|------------------------|---|-------------|

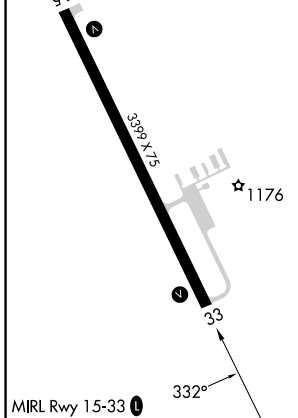
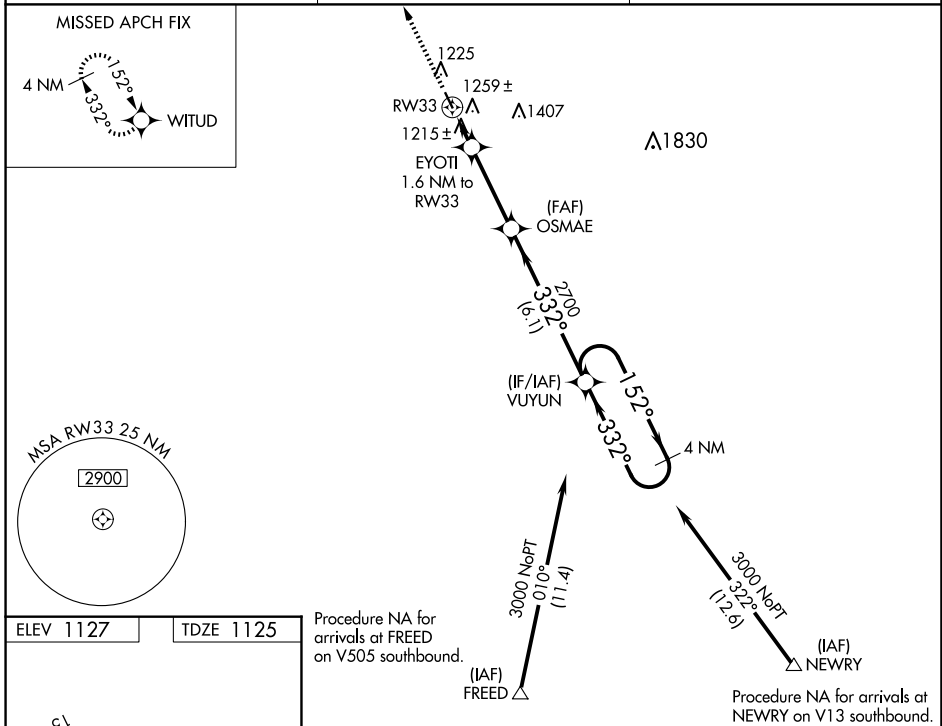
# RNAV (GPS) RWY 33

WASECA MUNI/MAYNARD RICHARD STENSRUD FLD (ACQ)

**⚠** When local altimeter setting not received, use Owatonna altimeter setting and increase all MDAs 40 feet, increase LP and LNAV Cat C visibility 1/8 mile and Circling Cat C visibility 1/8 mile. DME/DME RNP-0.3 NA. Procedure NA at night. Helicopter visibility reduction below 1 SM NA.

MISSED APPROACH: Climb to 3000 direct WITUD and hold.

|                          |  |                                 |
|--------------------------|--|---------------------------------|
| AWOS-3<br><b>118.425</b> | MINNEAPOLIS CENTER<br><b>135.0 306.9</b> | UNICOM<br><b>122.8 (CTAF) 0</b> |
|--------------------------|--|---------------------------------|



| CATEGORY          | A                     | B                     | C                             | D  |
|-------------------|-----------------------|-----------------------|-------------------------------|----|
| LP MDA            | 1480-1 355 (400-1)    |                       |                               | NA |
| LNAV MDA          | 1520-1                | 395 (400-1)           | 1520-1 1/8<br>395 (400-1 1/8) | NA |
| <b>C</b> CIRCLING | 1560-1<br>433 (500-1) | 1620-1<br>493 (500-1) | 1760-1 1/2<br>633 (700-1 1/2) | NA |

# RNAV (GPS) RWY 33

NC-1, 23 JAN 2025 to 20 FEB 2025

NC-1, 23 JAN 2025 to 20 FEB 2025