

APP CRS **033°**
 Rwy Idg **5132**
 TDZE **4793**
 Apt Elev **4831**

RNAV (GPS) RWY 3

SEDONA (SE/Z)

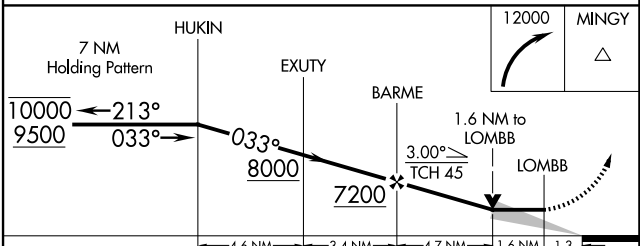
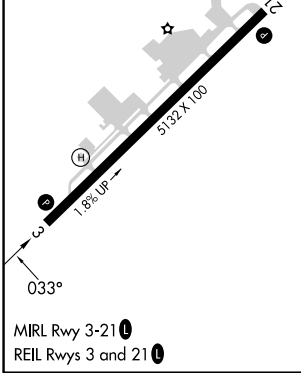
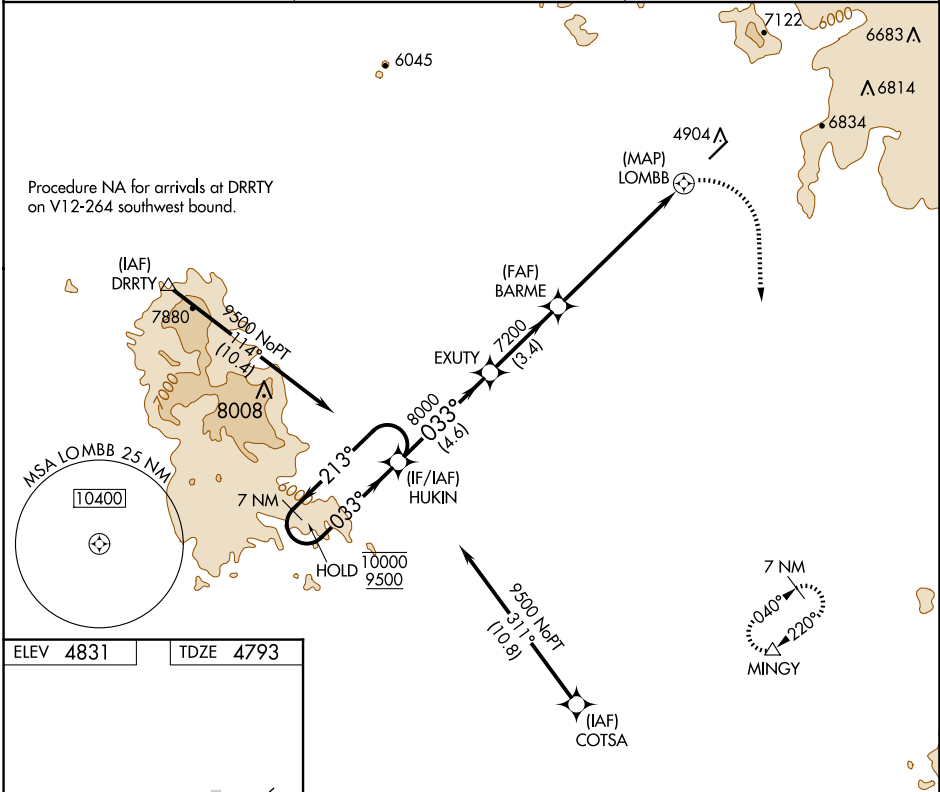
RNP APCH - GPS.
 Procedure NA for arrivals at DRRTY on V12-264 southwest bound.
 Circling RWY 21 NA at night. When local altimeter not received, procedure NA.

MISSED APPROACH: Climbing right turn to 12000 direct MINGY and hold, continue climb-in-hold to 12000

AWOS-3PT
118.525

PHOENIX APP CON
126.375 236.775

UNICOM
123.0 (CTAF) 0



CATEGORY	A	B	C	D
LNNAV MDA	5720-1½ 927 (1000-1½)	5740-1½ 947 (1000-1½)	6460-3 1667 (1700-3)	6640-3 1847 (1900-3)
<input checked="" type="checkbox"/> CIRCLING	5720-1½ 889 (900-1½)	5880-1½ 1049 (1100-1½)	7080-3 2249 (2300-3)	NA

SW-4, 23 JAN 2025 to 20 FEB 2025

SW-4, 23 JAN 2025 to 20 FEB 2025