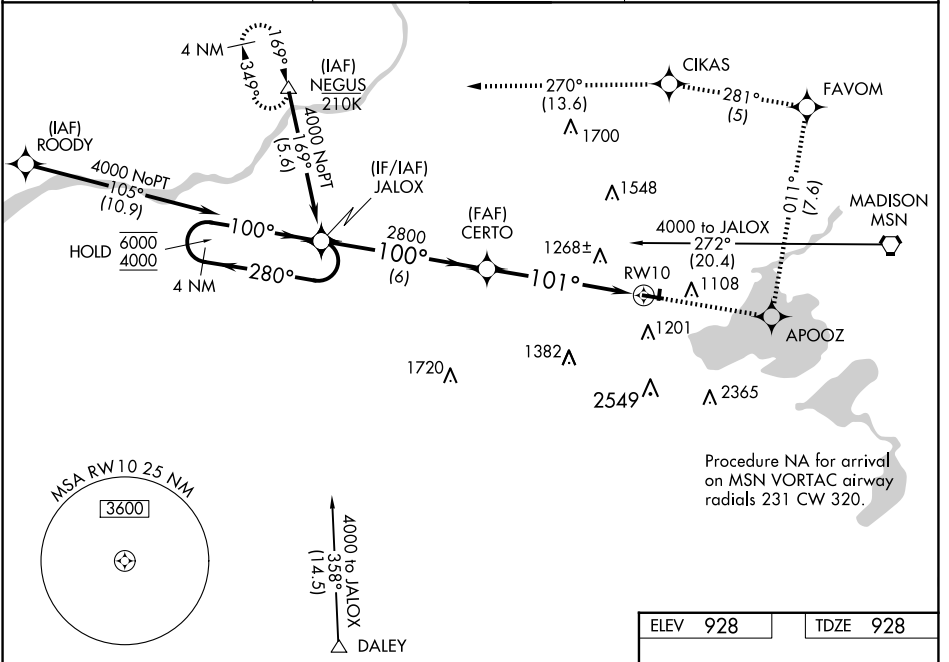


WAAS CH <b>62912</b> <b>W10A</b>	APP CRS <b>101°</b>	Rwy Idg TDZE Apt Elev	<b>4001</b> <b>928</b> <b>928</b>
--	------------------------	-----------------------------	---

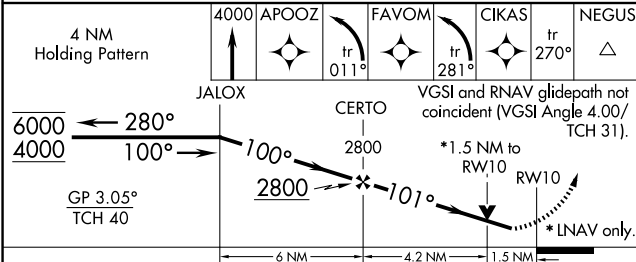
# RNAV (GPS) RWY 10

MIDDLETON MUNI/MOREY FLD (C29)

RNP APCH.		MISSED APPROACH: (Do not exceed 185K until APOOZ) Climb to 4000 direct APOOZ then climbing left turn on track 011° to FAVOM then climbing left turn on track 281° to CIKAS and track 270° to NEGUS and hold.
<p><b>▽</b> Circling NA to Rwy 1 and 19. Helicopter visibility reduction below ¾ SM NA.  <b>▲</b> For uncompensated Baro-VNAV systems, LNAV/VNAV NA below -16°C or above 54°C.</p>		
AWOS-3 <b>118.675</b>	MADISON APP CON * <b>135.45 343.7</b>	UNICOM <b>123.0 (CTAF) 0</b>



Procedure NA for arrival on MSN VORTAC airway radials 231 CW 320.



ELEV 928	TDZE 928
MIRL Rwy 10-28 0	
REIL Rwy 10 and 28 0	

CATEGORY	A	B	C	D
LPV DA	1408-1 3/8	480 (500-1 3/8)		NA
LNAV/VNAV DA	1596-1 7/8	668 (700-1 7/8)		NA
LNAV MDA	1600-1	672 (700-1)	1600-1 7/8 672 (700-1 7/8)	NA
<b>C</b> CIRCLING	1600-1 672 (700-1)	1620-1 692 (700-1)	1640-2 712 (800-2)	NA

EC-3, 23 JAN 2025 to 20 FEB 2025

EC-3, 23 JAN 2025 to 20 FEB 2025