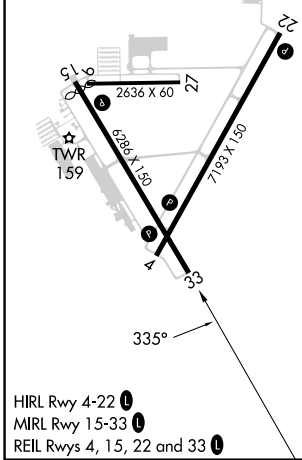
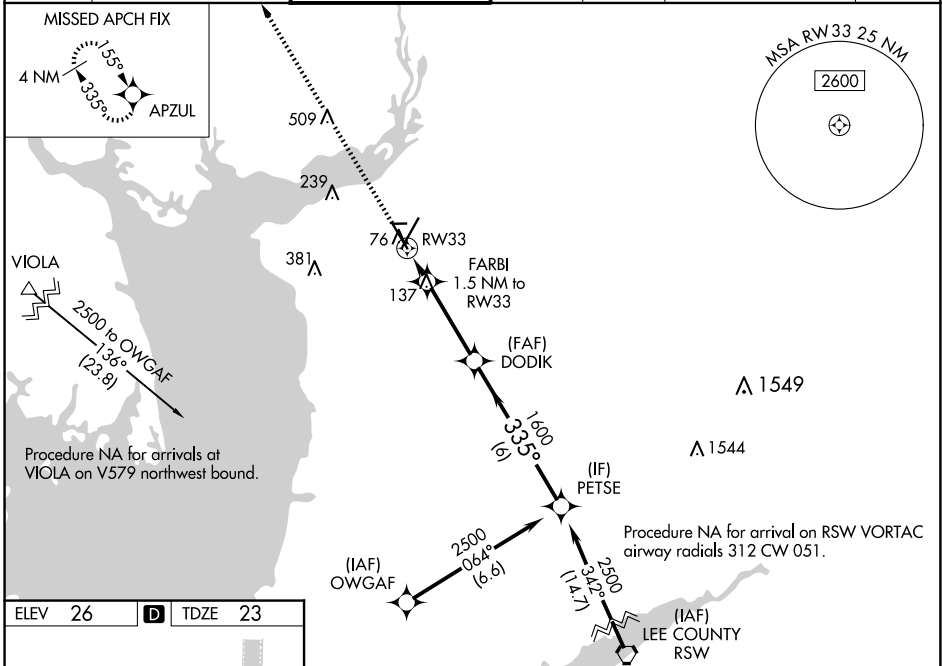


WAAS CH <b>93507</b> <b>W33A</b>	APP CRS <b>335°</b>	Rwy Idg TDZE Apt Elev	<b>6015</b> <b>23</b> <b>26</b>
--	------------------------	-----------------------------	---------------------------------------

# RNAV (GPS) RWY 33

PUNTA GORDA (PGD)

RNP APCH.				MISSED APPROACH: Climb to 2000 direct APZUL and hold.	
<p>▼ For uncompensated Baro-VNAV systems, LNAV/VNAV NA below 2°C or above 54°C.</p>					
ATIS ★ <b>135.675</b>	FORT MYERS APP CON ★ <b>127.05 306.2</b>	PUNTA GORDA TOWER ★ <b>121.0 (CTAF) 0</b>	GND CON <b>119.55</b>	CLNC DEL <b>119.55</b>	CLNC DEL <b>127.05</b> (When twr closed)
					UNICOM <b>122.975</b>



ELEV 26	<b>D</b>	TDZE 23		
<p>HIRL Rwy 4-22 0</p> <p>MIRL Rwy 15-33 0</p> <p>REIL Rws 4, 15, 22 and 33 0</p>				
2000	APZUL	FARBI	DODIK	PETSE
*LNAV only.				
<p>*1 NM to RW33</p> <p>1600</p> <p>2500</p> <p>335°</p> <p>1600</p> <p>GP 3.00° TCH 48</p>				
1 NM	0.5	3.3 NM	6 NM	
CATEGORY	A	B	C	D
LPV DA		273-3/4	250 (300-3/4)	
LNAV/VNAV DA		288-7/8	265 (300-7/8)	
LNAV MDA		400-1	377 (400-1)	
<b>C</b> CIRCLING	460-1 434 (500-1)	580-1 554 (600-1)	600-1 1/2 574 (600-1 1/2)	740-2 1/4 714 (800-2 1/4)