

| | | | |
|---|------------------------|-----------------------------|--|
| VOR/DME JVL 114.3 Chan 90 | APP CRS 118° | Rwy Idg TDZE Apt Elev | N/A N/A 817 |
|---|------------------------|-----------------------------|--|

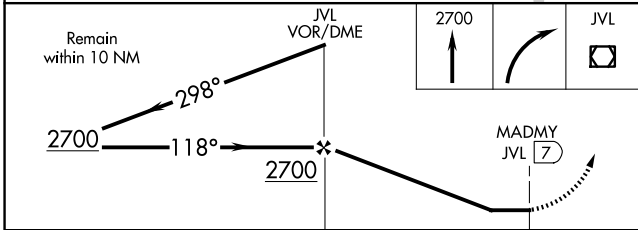
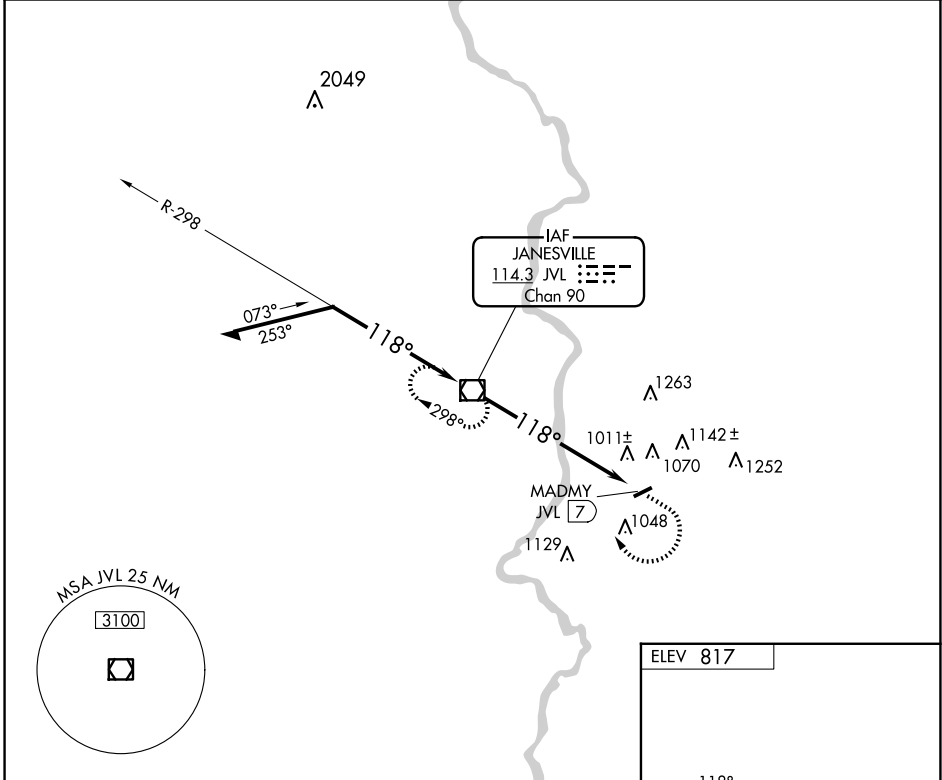
VOR-A
BELOIT (44C)

NA Use Janesville altimeter setting, when not received, use Chicago/Rockford Intl altimeter setting.

MISSED APPROACH: Climb to 2700 then right turn direct JVL VOR/DME and hold.

ROCKFORD APP CON **121.0 327.0**

UNICOM **122.7** (CTAF) **0**



ELEV 817

LIRL Rwy 7-25 **0**

| FAF to MAP 7 NM | |
|-----------------|--------------------------|
| Knots | 60 90 120 150 180 |
| Min:Sec | 7:00 4:40 3:30 2:48 2:20 |

| CATEGORY | A | B | C | D |
|--|-----------------------|-----------------------|---|----|
| CIRCLING | 1440-1 623 (700-1) | 1540-1 723 (800-1) | | NA |
| CHICAGO/ROCKFORD INTL ALTIMETER SETTING MINIMUMS | | | | |
| CIRCLING | 1480-1 663 (700-1) | 1580-1 763 (800-1) | | NA |

EC-3, 23 JAN 2025 to 20 FEB 2025

EC-3, 23 JAN 2025 to 20 FEB 2025