

APP CRS 247°	Rwy Idg 4033
	TDZE 764
	Apt Elev 775

RNAV (GPS) RWY 25

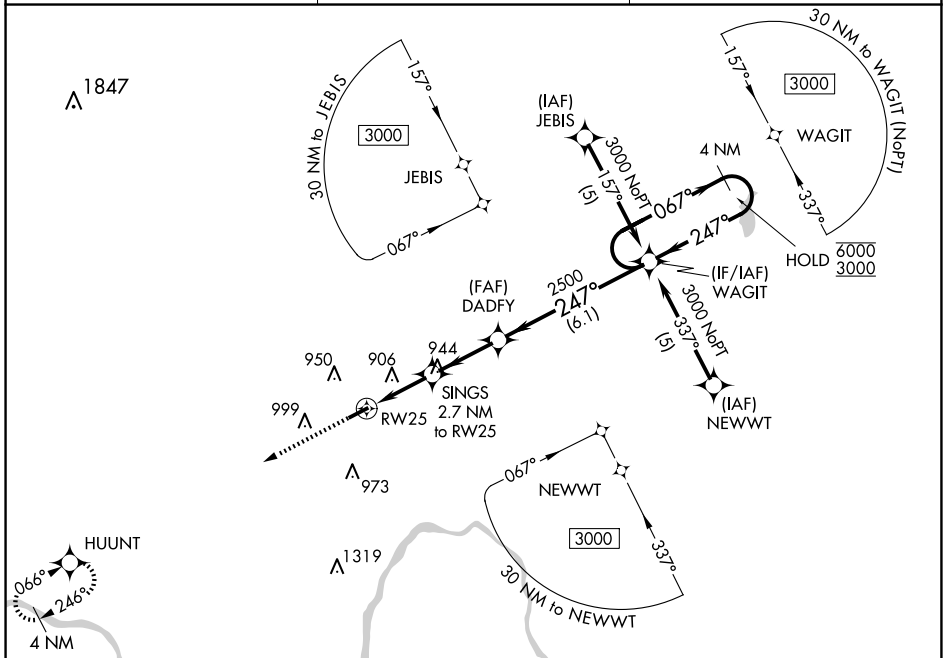
PAUL C MILLER/SPARTA (8D4)

RNP APCH.

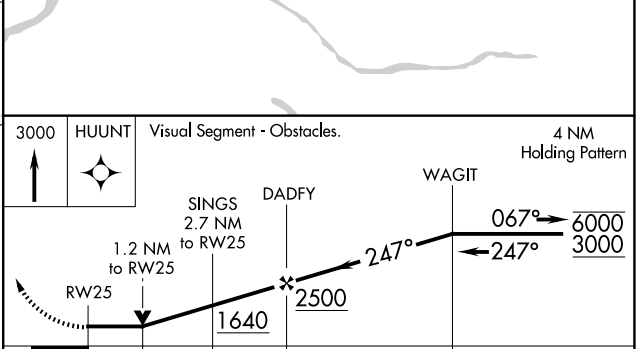
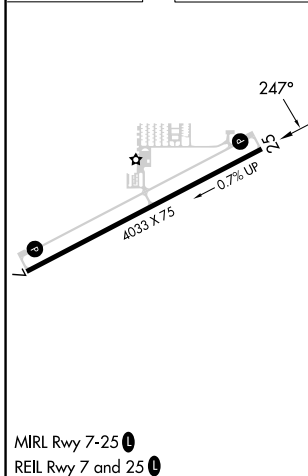
▼ Rwy 25 helicopter visibility reduction below 3/4 SM NA. When local altimeter setting not received, use Grand Rapids altimeter setting. VDP NA when using Grand Rapids
▲ NA

MISSED APPROACH:
Climb to 3000 direct
HUUNT and hold.

AWOS-3PT 126.65	GREAT LAKES APP CON * 124.6 257.6	UNICOM 122.8 (CTAF) 0
---------------------------	---	---------------------------------



ELEV 775	TDZE 764
----------	----------



CATEGORY	A	B	C	D
LNAV MDA	1240-1	476 (500-1)	NA	
C CIRCLING	1300-1 525 (600-1)	1340-1 565 (600-1)	NA	

EC-1, 23 JAN 2025 to 20 FEB 2025

EC-1, 23 JAN 2025 to 20 FEB 2025