

APP CRS	Rwy Idg	<b>4033</b>
<b>066°</b>	TDZE	<b>775</b>
	Apt Elev	<b>775</b>

# RNAV (GPS) RWY 7

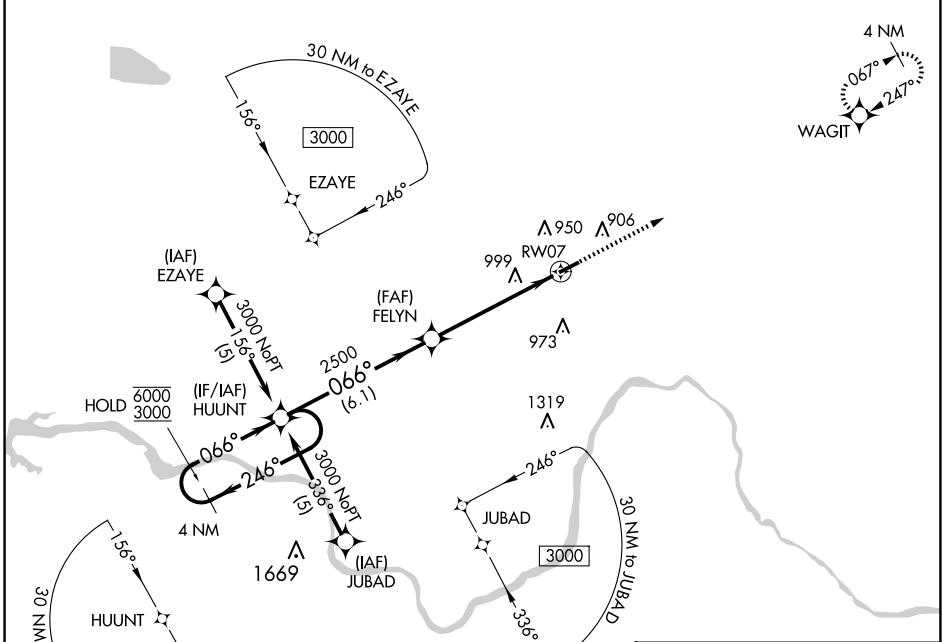
PAUL C MILLER/SPARTA (8D4)

RNP APCH:

**▼** Rwy 7 helicopter visibility reduction below 3/4 SM NA. When local altimeter setting not received, use Grand Rapids altimeter setting. VDP NA when using Grand Rapids altimeter setting.  
**▲NA**

MISSED APPROACH: Climb to 3000 direct WAGIT and hold.

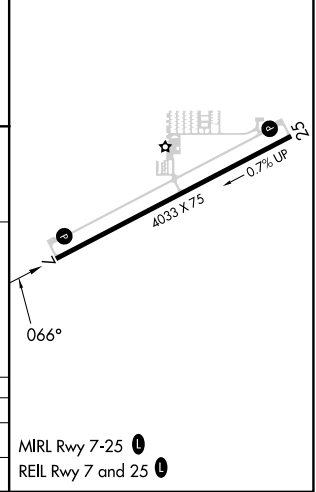
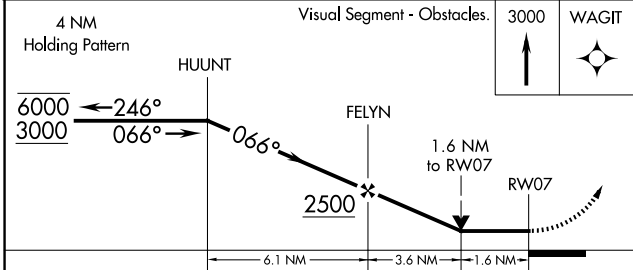
AWOS-3PT <b>126.65</b>	GREAT LAKES APP CON * <b>124.6 257.6</b>	UNICOM <b>122.8 (CTAF) 0</b>
---------------------------	---	---------------------------------



EC-1, 23 JAN 2025 to 20 FEB 2025

EC-1, 23 JAN 2025 to 20 FEB 2025

ELEV 775	TDZE 775
----------	----------



CATEGORY	A	B	C	D
LNAV MDA	1380-1	605 (700-1)		NA
<b>CIRCLING</b>	1380-1	605 (700-1)		NA

MIRL Rwy 7-25 **0**  
 REIL Rwy 7 and 25 **0**