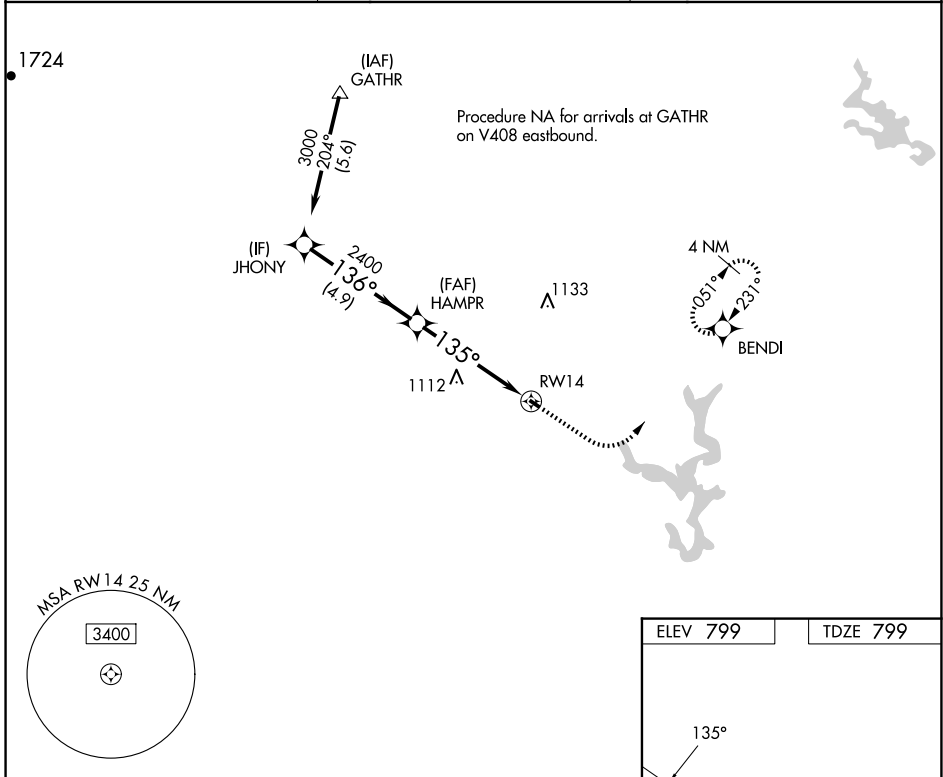


|                        |                        |
|------------------------|------------------------|
| APP CRS<br><b>135°</b> | Rwy Idg<br><b>1840</b> |
|                        | TDZE<br><b>799</b>     |
|                        | Apt Elev<br><b>799</b> |

# RNAV (GPS) RWY 14

CLEARVIEW AIRPARK (2W2)

|  |   |   |
|--|---|---|
| RNP APCH.  |   | MISSED APPROACH: Climb to 1500 then climbing left turn to 3000 direct BENDI and hold. |
| <p><b>▼</b> Procedure NA at night. Rwy 14 helicopter visibility reduction below 1 SM NA. Use Carroll County Rgnl/Jack B. Poage Fld altimeter setting, when not received, use Gaithersburg altimeter setting and increase all MDA 60 feet.</p> <p><b>▲</b> NA</p> |   |   |
| DMW AWOS-3<br><b>121.25</b>  | POTOMAC APP CON<br><b>125.525 291.625</b> | UNICOM<br><b>122.8 (CTAF) 0</b>   |



NE-3, 23 JAN 2025 to 20 FEB 2025

NE-3, 23 JAN 2025 to 20 FEB 2025

|          |                             |      |      |      |       |
|----------|-----------------------------|------|------|------|-------|
| JHONY    | Visual Segment - Obstacles. |      | 1500 | 3000 | BENDI |
|          |                             |      |      |      |       |
| 4.9 NM   |                             | 5 NM |      |      |       |
| CATEGORY | A                           | B    | C    | D    |       |
| LNAV MDA | 1360-1<br>561 (600-1)       |      | NA   |      |       |
| CIRCLING | 1360-1<br>561 (600-1)       |      | NA   |      |       |

