

VORTAC IRQ 113.9 Chan 86	APP CRS 243°	Rwy Idg TDZE Apt Elev	N/A N/A 501
--	------------------------	-----------------------------	--

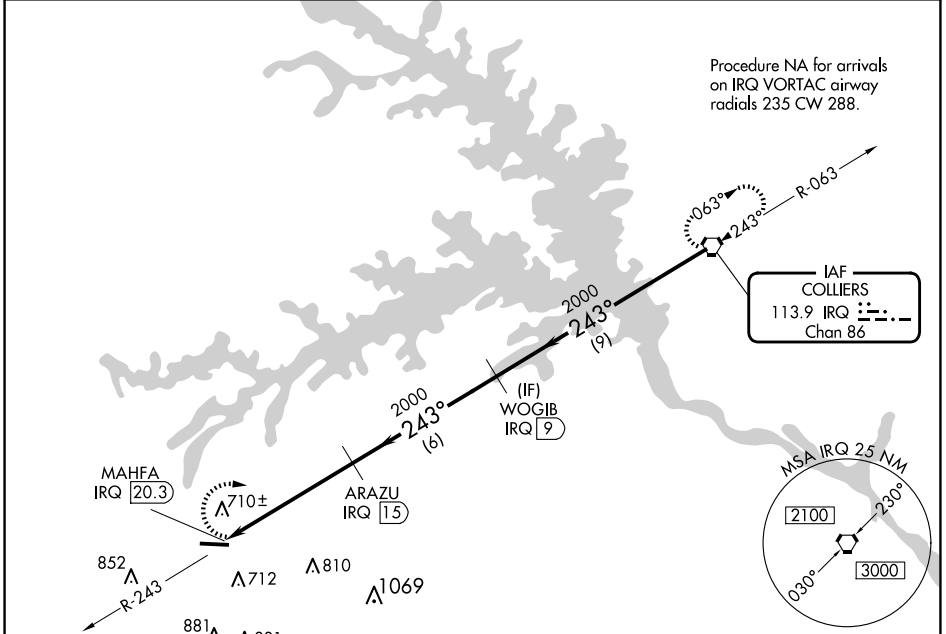
VOR/DME-A

THOMSON/McDUFFIE COUNTY (HQU)

▼ Visibility reduction by helicopters NA. When local altimeter setting not received, use Daniel Field altimeter setting and increase all MDAs 80 feet and visibility Cat C ¼ SM and Cat D ½ SM.

▲ MISSED APPROACH: Climbing right turn to 2400 direct IRQ VORTAC and hold.

AWOS-3 120.625	AUGUSTA APP CON * 124.45 270.3	UNICOM 122.8 (CTAF) ①
--------------------------	--	--

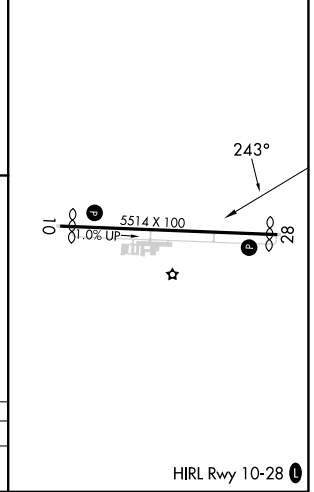
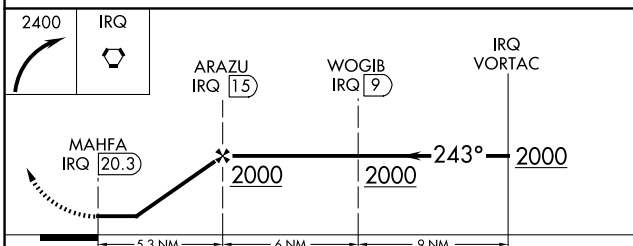


Procedure NA for arrivals on IRQ VORTAC airway radials 235 CW 288.

SE-4, 23 JAN 2025 to 20 FEB 2025

SE-4, 23 JAN 2025 to 20 FEB 2025

ELEV 501 **D**



CATEGORY	A	B	C	D
CIRCLING	1060-1 559 (600-1)	1080-1¼ 579 (600-1¼)	1160-1¾ 659 (700-1¾)	1240-2¼ 739 (800-2¼)

HIRL Rwy 10-28 **①**