

| | | |
|---------------------------------|------------------------|------------------------|
| WAAS CH 40215 W21A | APP CRS 205° | Rwy Idg 5190 |
| | | TDZE 194 |
| | | Apt Elev 198 |

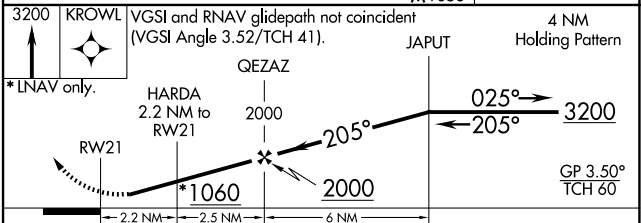
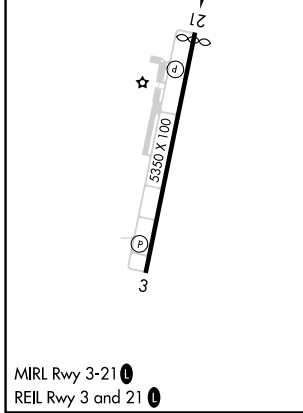
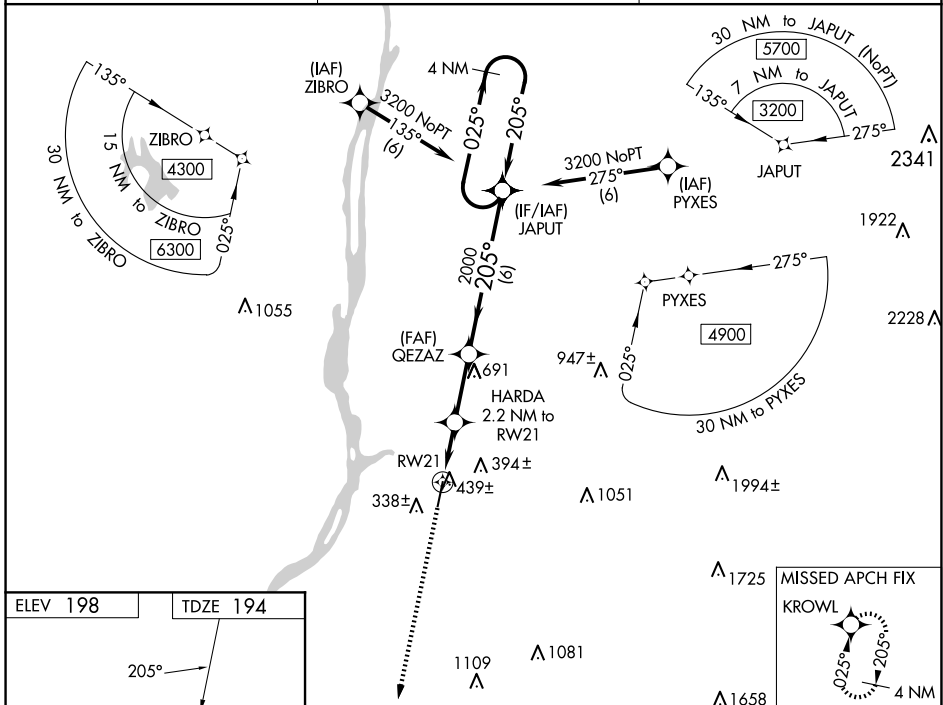
RNAV (GPS) RWY 21

COLUMBIA COUNTY (1B1)

NA Baro-VNAV NA when using Albany altimeter setting. For uncompensated Baro-VNAV systems, LNAV/VNAV NA below -15°C (5°F) or above 14°C (58°F). Rwy 21 helicopter visibility reduction below 1 SM NA. DME/DME RNP -0.3 NA. Straight-In Rwy 21 and Circling Rwy 21 NA at night. When local altimeter setting not received, use Albany altimeter setting and increase LPV DA to 638 feet and visibility to 1 3/8 SM all Cats, LNAV/VNAV DA to 709 feet and visibility to 1 3/8 SM all Cats; increase all MDA 80 feet, LNAV Cat C/D visibility to 1 3/4 SM, Circling Cat C to 2 1/4 SM, and Cat D to 3 SM.

MISSED APPROACH: Climb to 3200 direct KROWL and hold, continue climb-in-hold to 3200.

| | | |
|--------------------------|--|--------------------------------|
| AWOS-3 133.525 | ALBANY APP CON 132.825 307.2 | UNICOM 123.05 (CTAF) |
|--------------------------|--|--------------------------------|



| | | | | |
|-------------------|----------------------|----------------------|------------------------------|-------------------------------|
| CATEGORY | A | B | C | D |
| LPV DA | | 562-1 | 368 (400-1) | |
| LNAV/VNAV DA | | 633-1 1/4 | 439 (500-1 1/4) | |
| LNAV MDA | 700-1 | 506 (600-1) | 700-1 3/8 | 506 (600-1 3/8) |
| C CIRCLING | 740-1 542 (600-1) | 860-1 662 (700-1) | 860-1 3/4 662 (700-1 3/4) | 1020-2 3/4 822 (900-2 3/4) |

NE-2, 23 JAN 2025 to 20 FEB 2025

NE-2, 23 JAN 2025 to 20 FEB 2025