

LOC/DME I-OSV 110.75 Chan 44 (Y)	APP CRS 094°	Rwy Idg 7001 TDZE 76 Apt Elev 76
--	------------------------	---

ILS or LOC RWY 9

BROOKSVILLE-TAMPA BAY RGNL (BKV)

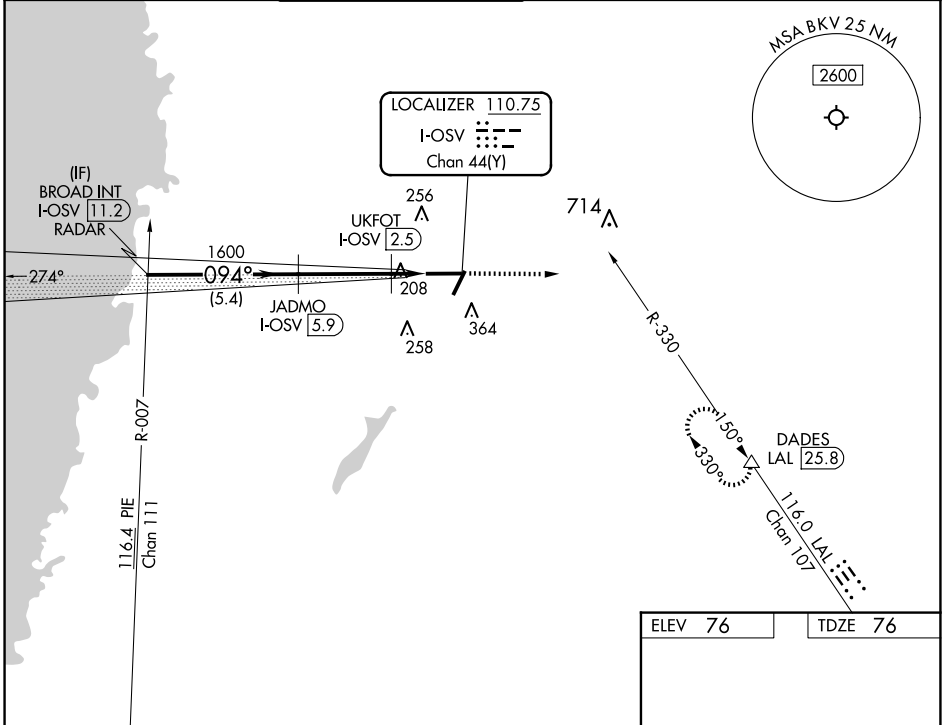
RADAR required for procedure entry. DME required.

NA

MALSR

MISSED APPROACH: Climb to 3000 on heading 090° and LAL VORTAC R-330 to DADES/LAL VORTAC 25.8 DME and hold.

ASOS 134.725	TAMPA APP CON 125.3 316.05	BROOKSVILLE TOWER ★ 118.55 (CTAF) 0	GND CON 121.4	CLNC DEL 119.125 (When twr closed)	UNICOM 123.0
------------------------	--------------------------------------	--	-------------------------	---	------------------------



SE-3, 23 JAN 2025 to 20 FEB 2025

SE-3, 23 JAN 2025 to 20 FEB 2025

	ELEV 76		TDZE 76	
	BROAD INT I-OSV 11.2 RADAR		3000 hdg 090°	LAL R-330
	JADMO I-OSV 5.9		DADES △	
	UKFOT I-OSV 2.5		*LOC only.	
	I-OSV 1.2			
	GS 3.00° TCH 57			
	2000			
	094°			
	1600			
	*520			
	5.4 NM		3.3 NM	
	1.3 NM			
CATEGORY	A	B	C	D
S-ILS 9	276-½ 200 (200-½)			
S-LOC 9	460-½	384 (400-½)	460-⅝	384 (400-⅝)
CIRCLING	680-1	604 (700-1)	680-1¾ 604 (700-1¾)	760-2¼ 684 (700-2¼)
	MIRL Rwy 3-21 and 9-27 0			