

WAAS CH <b>45732</b> <b>W35A</b>	APP CRS <b>346°</b>	Rwy Idg TDZE Apt Elev	<b>4010</b> <b>1522</b> <b>1523</b>
----------------------------------------	------------------------	-----------------------------	-------------------------------------------

# RNAV (GPS) RWY 35

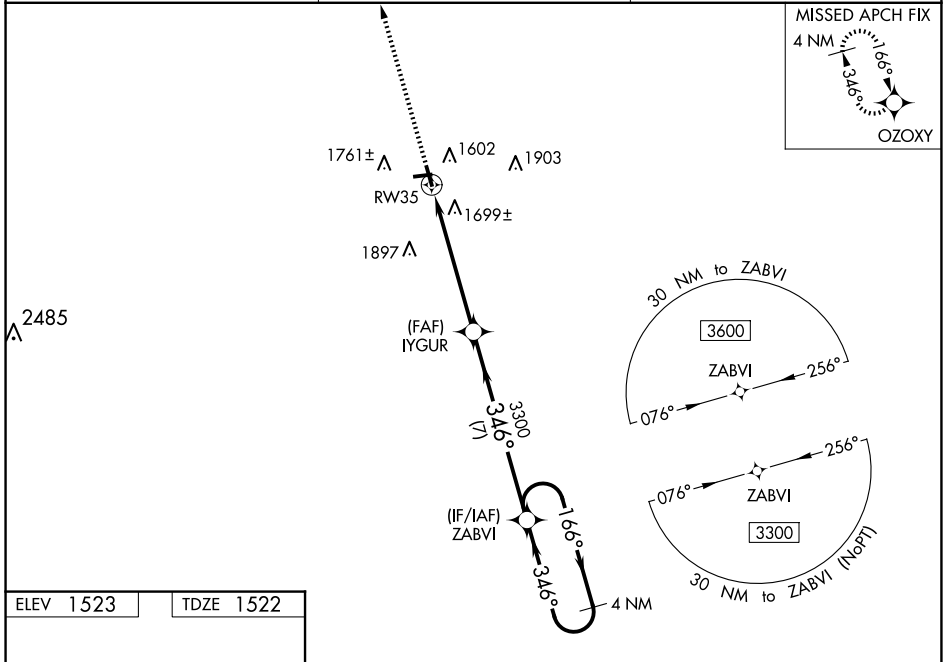
LANGLADE COUNTY (AIG)

RNP APCH - GPS.

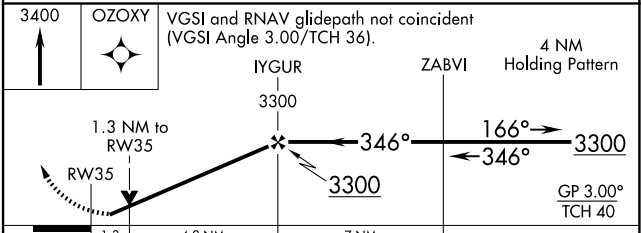
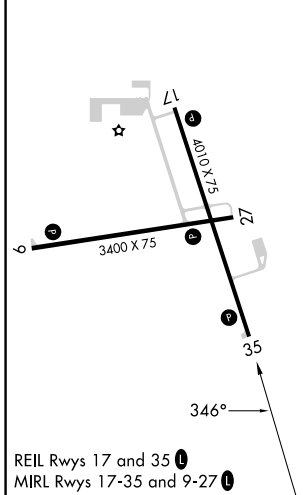
▼ For uncompensated Baro-VNAV systems, LNAV/VNAV NA below -18°C or above 54°C .  
 ▲ Baro-VNAV and VDP NA when using AUW altimeter setting. Helicopter visibility reduction below ¾ SM NA. When local altimeter setting not received, use AUW altimeter setting and increase LPV DA to 1877 feet and all visibilities ¼ SM. Increase LNAV/VNAV DA to 2124 feet and all visibilities ⅓ SM. Increase all MDAs 120 feet and LNAV visibility Cat C/D ⅓ SM, and Circling visibility Cat C/D ½ SM.

MISSED APPROACH:  
Climb to 3400 direct OZOXY and hold.

AWOS-3 <b>119.075</b>	MINNEAPOLIS CENTER <b>124.4 317.7</b>	UNICOM <b>122.8 (CTAF)</b>
--------------------------	------------------------------------------	-------------------------------



ELEV 1523	TDZE 1522
-----------	-----------



CATEGORY	A	B	C	D
LPV DA		1772-1	250 (300-1)	
LNAV/VNAV DA		2019-1¾	497 (500-1¾)	
LNAV MDA	1960-1	438 (500-1)	1960-1¼	438 (500-1¼)
CIRCLING	2120-1	597 (600-1)	2260-2 737 (800-2)	2260-2¼ 737 (800-2¼)

EC-3, 23 JAN 2025 to 20 FEB 2025

EC-3, 23 JAN 2025 to 20 FEB 2025