

ULYSSES, KANSAS

AL-6226 (FAA)

23334

WAAS CH <b>99539</b> <b>W12A</b>	APP CRS <b>124°</b>	Rwy ldg TDZE Apt Elev	<b>4600</b> <b>3071</b> <b>3071</b>
--	------------------------	-----------------------------	---

# RNAV (GPS) RWY 12

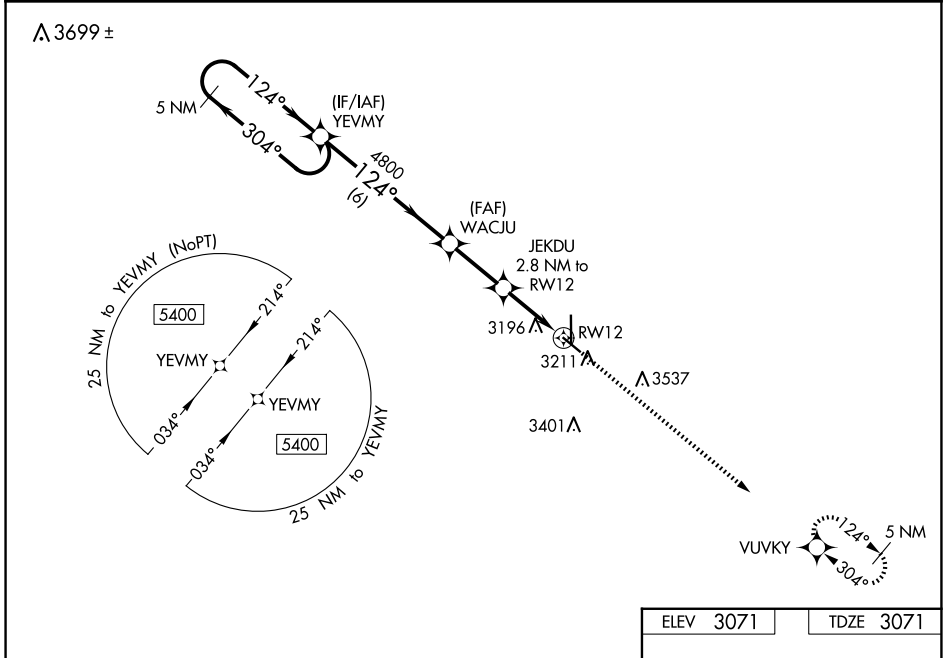
ULYSSES (ULS)

RNP APCH - GPS.

**⚠** For uncompensated Baro-VNAV systems, LNAV/VNAV NA below -21°C or above 54°C.  
**⚠** When local altimeter setting not received, use Garden City altimeter setting: increase LPV DA to 3431 feet, LNAV/VNAV DA to 3563 feet and visibility 1/8 SM; increase all MDAs 120 Feet and visibility Cat C 1/4 SM. Baro-VNAV and VDP NA when using Garden City altimeter setting.

**MISSED APPROACH:**  
 Climb to 5400 direct VUVKY and hold.

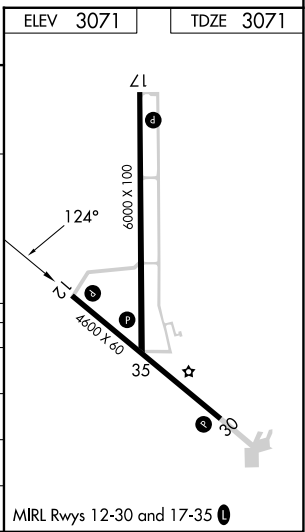
AWOS-3PT <b>118.95</b>	KANSAS CITY CENTER <b>125.2 285.425</b>	UNICOM <b>122.8 (CTAF) 0</b>
---------------------------	--	---------------------------------



NC-2, 23 JAN 2025 to 20 FEB 2025

NC-2, 23 JAN 2025 to 20 FEB 2025

5400 ← 304°		YEVMY		WACJU 4800		JEKDU 2.8 NM to RWY12		5400		VUVKY	
GP 3.00°				4800							
TCH 40				4000							
		6 NM		2.5 NM		1.7 NM		1.1 NM			
CATEGORY		A	B	C	D						
LPV DA		3321-1 250 (300-1)			NA						
LNAV/VNAV DA		3453-1 1/4 382 (400-1 1/4)			NA						
LNAV MDA		3460-1	389 (400-1)	3460-1 1/8 389 (400-1 1/8)	NA						
<b>C</b> CIRCLING		3740-1	669 (700-1)	3900-2 1/2 829 (900-2 1/2)	NA						



ULYSSES, KANSAS  
 Amdt 2A 06OCT22

37°36'N-101°22'W

# ULYSSES (ULS) RNAV (GPS) RWY 12