

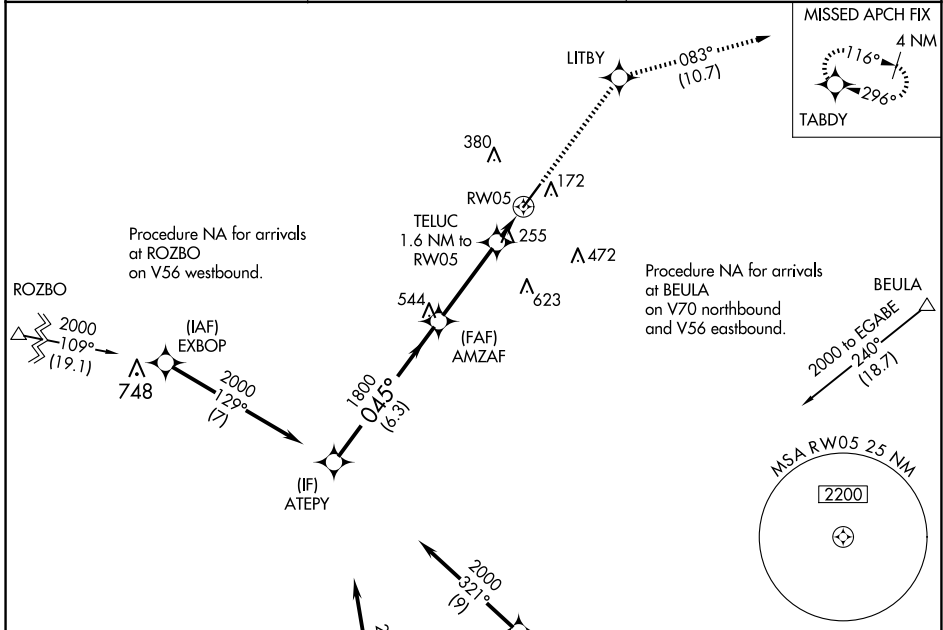
WAAS CH <b>63121</b> <b>W05A</b>	APP CRS <b>045°</b>	Rwy Idg TDZE Apt Elev	<b>6003</b> <b>135</b> <b>137</b>
--	------------------------	-----------------------------	---

# RNAV (GPS) RWY 5

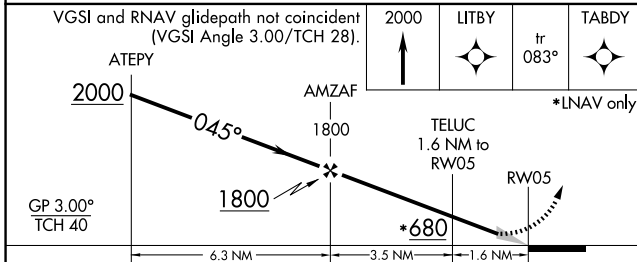
DUPLIN COUNTY (DPL)

RNP APCH.	MISSED APPROACH: Climb to 2000 direct LITBY and on track 083° to TABDY and hold.
-----------	--

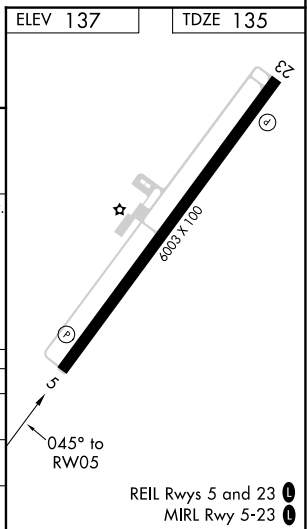
AWOS-3 <b>120.675</b>	SEYMOUR JOHNSON APP CON* <b>119.7 273.6</b>	UNICOM <b>123.0 (CTAF) 0</b>
--------------------------	--	---------------------------------



ELEV 137	TDZE 135
----------	----------



CATEGORY	A	B	C	D
LPV DA		385-3/4	250 (300-3/4)	
LNAV/VNAV DA		396-7/8	261 (300-7/8)	
LNAV MDA	520-1	385 (400-1)	520-1 1/8	385 (400-1 1/8)



SE-2, 23 JAN 2025 to 20 FEB 2025

SE-2, 23 JAN 2025 to 20 FEB 2025