

(AUREL3.SIRPE) 21112

AURELIA THREE DEPARTURE(RNAV)

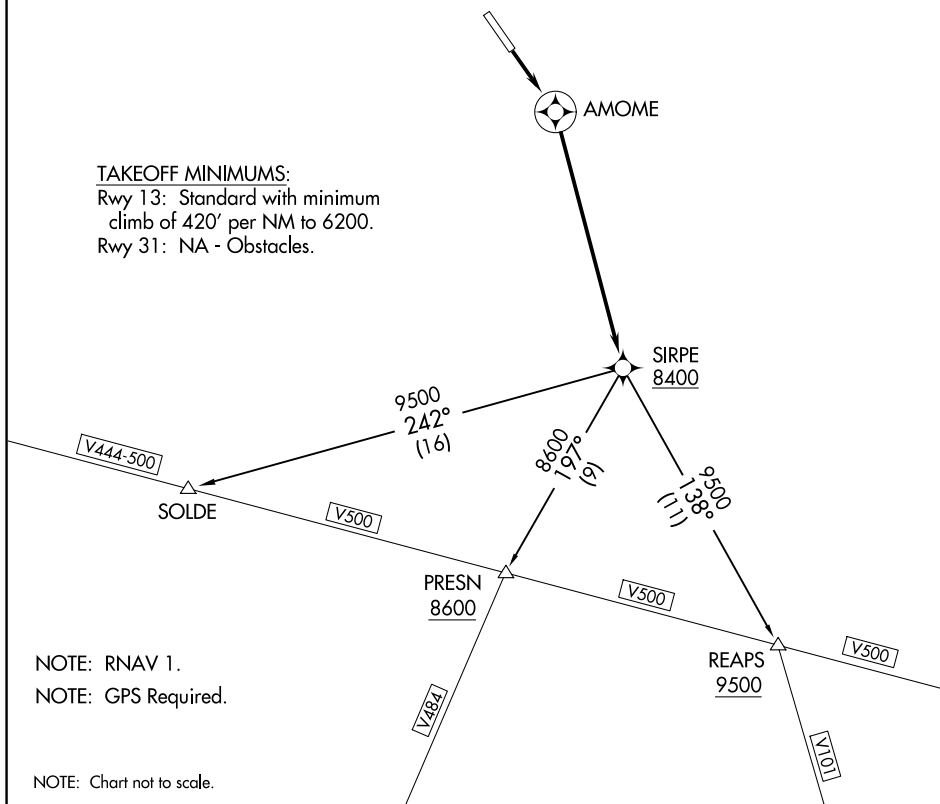
AL-6239 (FAA)

FRIEDMAN MEML (SUN)
HAILEY, IDAHO

TOP ALTITUDE:
PRESN AND REAPS TRANSITIONS: 10000;
SOLDE TRANSITION: ASSIGNED BY ATC

GND CON 121.7
HAILEY TOWER * 125.6
SALT LAKE CENTER 118.05 363.0
UNICOM 122.95

TAKEOFF MINIMUMS:
Rwy 13: Standard with minimum climb of 420' per NM to 6200.
Rwy 31: NA - Obstacles.



NW-1, 23 JAN 2025 to 20 FEB 2025

NW-1, 23 JAN 2025 to 20 FEB 2025

NOTE: RNAV 1.
NOTE: GPS Required.

NOTE: Chart not to scale.



DEPARTURE ROUTE DESCRIPTION

TAKEOFF RUNWAY 13: Climb direct AMOME, then climbing right turn direct SIRPE; cross SIRPE at or above 8400, thence. . . .
. . . .on (Transition).

PRESN TRANSITION (AUREL3.PRESN)

REAPS TRANSITION (AUREL3.REAPS)

SOLDE TRANSITION (AUREL3.SOLDE)

AURELIA THREE DEPARTURE(RNAV)
(AUREL3.SIRPE) 21JUL16

HAILEY, IDAHO
FRIEDMAN MEML (SUN)