

WAAS CH <b>77834</b> <b>W02A</b>	APP CRS <b>023°</b>	Rwy Idg TDZE Apt Elev	<b>5000</b> <b>805</b> <b>812</b>
--	------------------------	-----------------------------	---

# RNAV (GPS) RWY 2

LA PORTE MUNI (PPO)

RNP APCH - GPS.

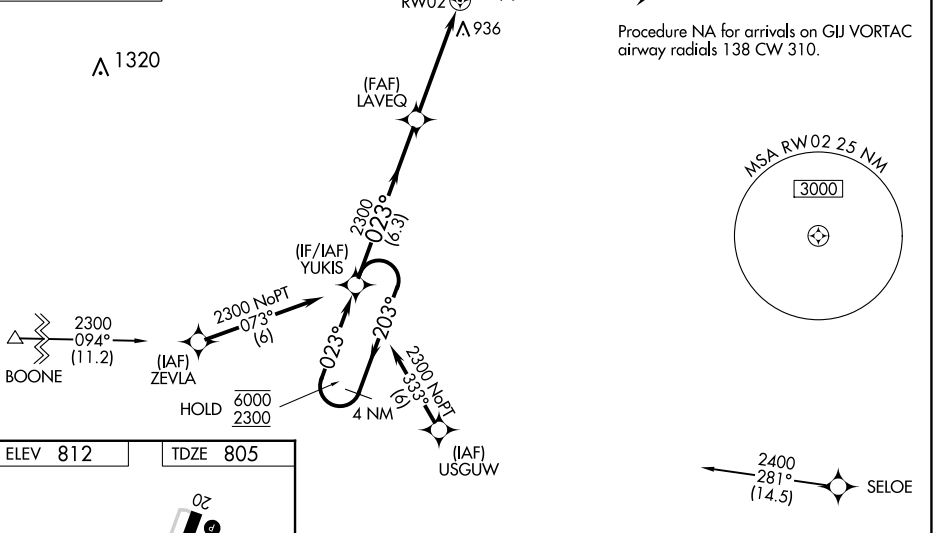
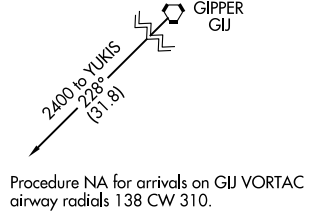
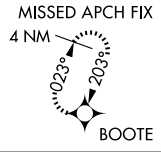
**⚠** Circling Rwy 14, 32 NA at night. For uncompensated Baro-VNAV systems, LNAV/VNAV NA below -16°C or above 54°C. Rwy 2 helicopter visibility reduction below ¼ SM NA. Baro-VNAV and VDP NA when using South Bend altimeter setting. When local altimeter setting not received, use South Bend altimeter setting and increase LPV DA to 1151 feet and all visibilities ½ SM. Increase LNAV/VNAV DA to 1271 feet and all visibilities ¼ SM. Increase all MDAs 60 feet and LNAV visibility Cat C/D ¼ SM, and Circling visibility Cat C/D ¼ SM.

MISSED APPROACH:  
Climb to 2500 direct  
BOOTE and hold.

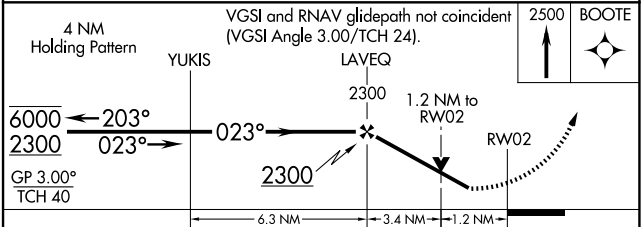
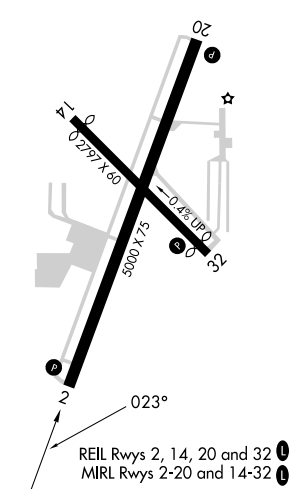
AWOS-3PT  
**119.825**

SOUTH BEND APP CON \*  
**132.05 257.8**

UNICOM  
**123.0 (CTAF) 0**



ELEV 812	TDZE 805
----------	----------



CATEGORY	A	B	C	D
LPV DA	1098-7/8		293 (300-7/8)	
LNAV/VNAV DA	1220-1 1/8		415 (500-1 1/8)	
LNAV MDA	1220-1	415 (500-1)	1220-1 1/8	415 (500-1 1/8)
<input checked="" type="checkbox"/> CIRCLING	1320-1	508 (600-1)	1560-2 1/4 748 (800-2 1/4)	1560-2 1/2 748 (800-2 1/2)