

VORTAC AEX <b>116.1</b> Chan <b>108</b>	APP CRS <b>110°</b>	Rwy Idg TDZE Apt Elev <b>N/A</b> <b>N/A</b> <b>79</b>
---	------------------------	--

**VOR-A**  
MARKSVILLE MUNI (MKV)

DME required.

**NA** Circling Rwy 22 NA at night. Use Esler Rgnl altimeter setting.  
When not received, use Alexandria Intl altimeter setting.

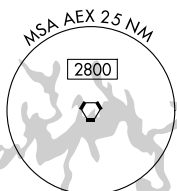
MISSED APPROACH: Climbing left turn to 4000 on AEX VORTAC R-106 to MUSHE INT/AEX 18.9 DME and hold, continue climb-in-hold to 4000.

ESF ASOS  
**119,425**

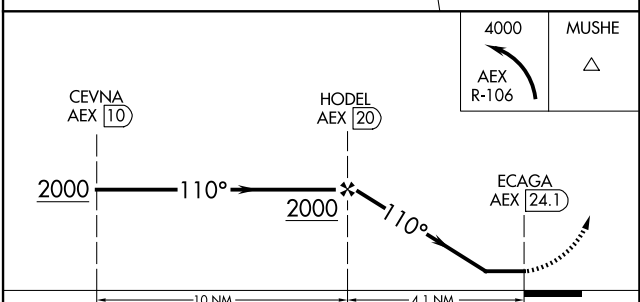
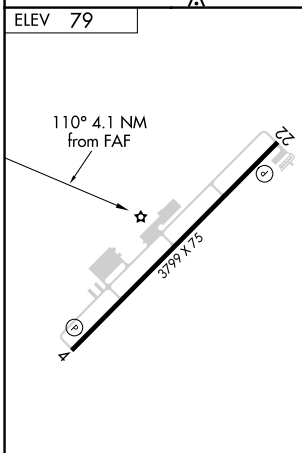
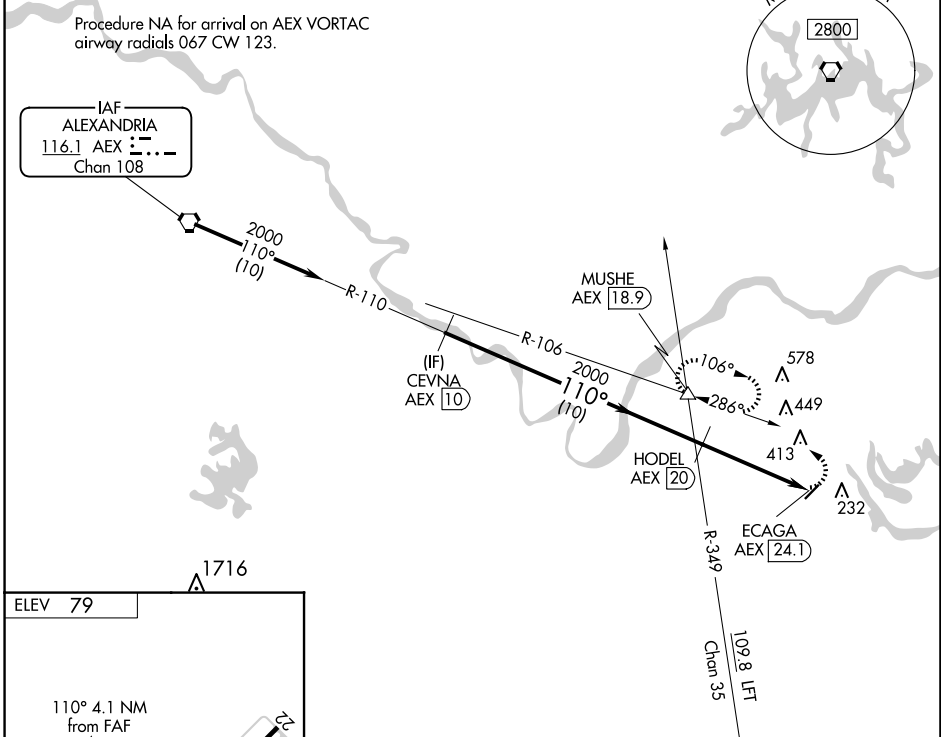
POLK APP CON  
**125.4 302.2**

CTAF  
**122.9**

Procedure NA for arrival on AEX VORTAC airway radials 067 CW 123.



IAF  
ALEXANDRIA  
**116.1** AEX **116.1**  
Chan 108



CATEGORY	A	B	C	D
<b>C</b> CIRCLING	760-1 681 (700-1)	820-1¼ 741 (800-1¼)		NA

MIRL Rwy 4-22 **1**  
REIL Rwys 4 and 22 **1**

SC-4, 23 JAN 2025 to 20 FEB 2025

SC-4, 23 JAN 2025 to 20 FEB 2025