

APP CRS	Rwy Idg	3716
176°	TDZE	1502
	Apt Elev	1514

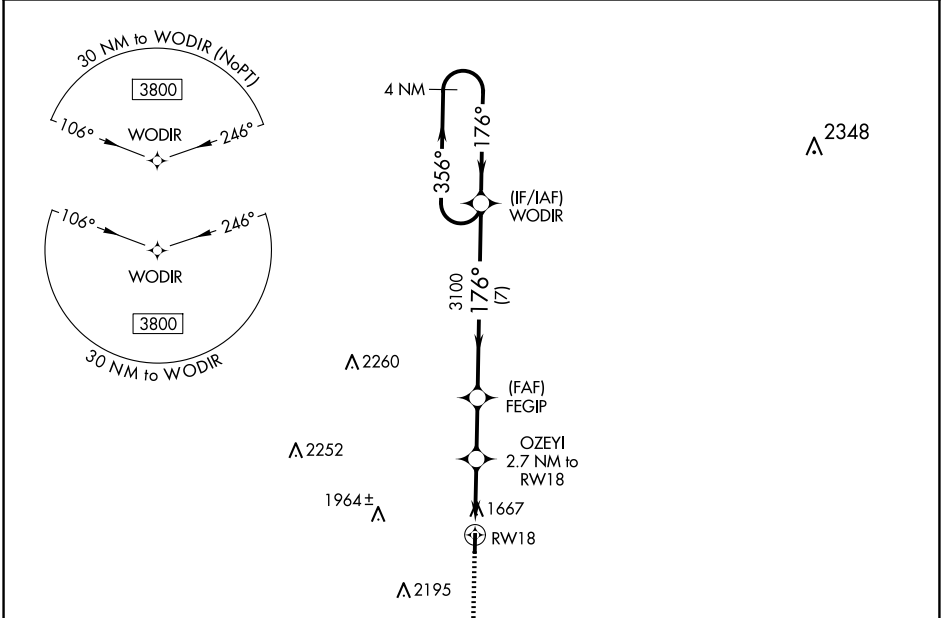
RNAV (GPS) RWY 18

MASON COUNTY (T92)

▼ Rwy 18/36 helicopter visibility reduction below 1 SM NA.
▲ NA DME/DME RNP-0.3 NA. Procedure NA at night.
 Use Brady altimeter setting; when not received, use Llano altimeter setting and increase all MDAs 20 feet.

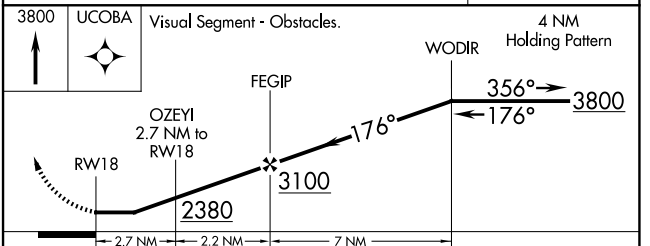
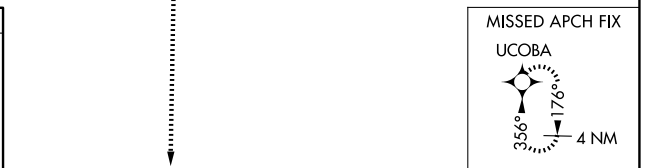
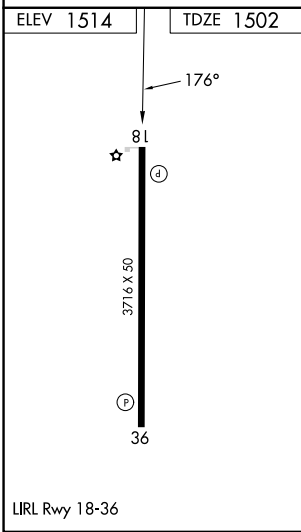
MISSED APPROACH: Climb to 3800 direct UCOBA and hold.

BBD AWOS-3 118.375	HOUSTON CENTER 132.35 317.5	CTAF 122.9
------------------------------	---------------------------------------	----------------------



SC-3, 23 JAN 2025 to 20 FEB 2025

SC-3, 23 JAN 2025 to 20 FEB 2025



CATEGORY	A	B	C	D
LNNAV MDA	2080-1	578 (600-1)	NA	
C CIRCLING	2140-1	626 (700-1)	NA	