

BRENNHAM, TEXAS

AL-6271 (FAA)

19311

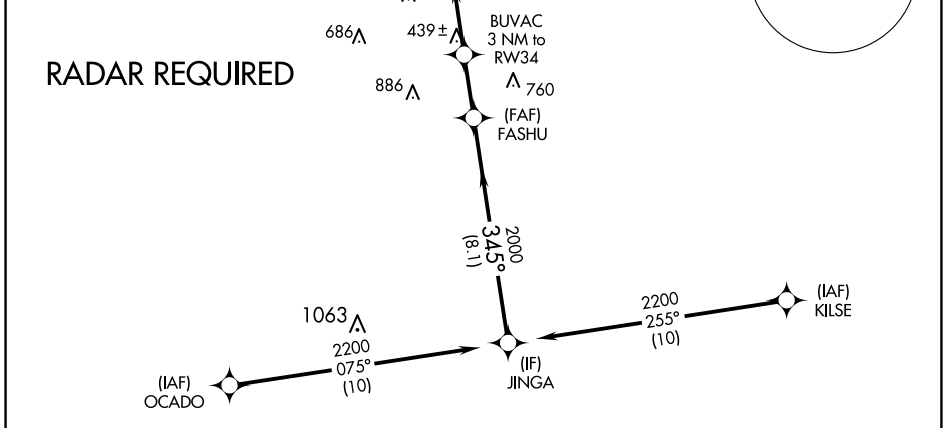
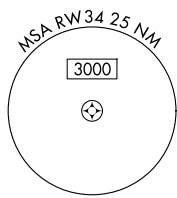
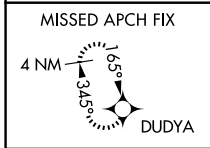
WAAS CH 77616 W34A	APP CRS 345°	Rwy Idg TDZE Apt Elev	6003 269 318
--	------------------------	-----------------------------	---

RNAV (GPS) RWY 34

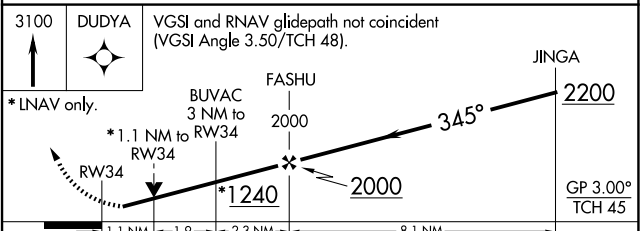
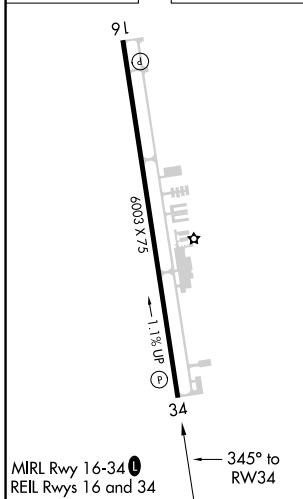
BRENNHAM MUNI (11R)

RNP APCH.	<p>▼ For uncompensated Baro-VNAV systems, LNAV/VNAV NA below -1.5°C or above 37°C. Rwy 34 helicopter visibility reduction below ¾ SM NA. When local altimeter setting not received, use College Station altimeter setting and increase all DA 52 feet, and all MDA 60 feet; increase LPV and LNAV/VNAV all Cats visibility ¼ SM. VDP and Baro-VNAV NA with College Station altimeter setting.</p>	MISSED APPROACH: Climb to 3100 direct DUDYA and hold.
-----------	---	---

AWOS-3 121.125	HOUSTON APP CON 134.3 360.85	UNICOM 123.075 (CTAF)
--------------------------	--	---------------------------------



ELEV 318	TDZE 269
----------	----------



CATEGORY	A	B	C	D
LPV DA		519-¾	250 (200-¾)	
LNAV/VNAV DA		718-1½	449 (400-1½)	
LNAV MDA	700-1	431 (400-1)	700-1¾	431 (400-1¾)

BRENNHAM, TEXAS
Amdt 2B 07NOV19

30°13'N-96°22'W

BRENNHAM MUNI (11R) RNAV (GPS) RWY 34

SC-5, 23 JAN 2025 to 20 FEB 2025

SC-5, 23 JAN 2025 to 20 FEB 2025