

APP CRS **181°**  
 Rwy Idg **5007**  
 TDZE **314**  
 Apt Elev **319**

# RNAV (GPS) RWY 18

RALPH C WEISER FLD (AGO)

RNP APCH - GPS.

▼ When local altimeter setting not received, use El Dorado altimeter setting and increase all MDAs 60 feet. VDP NA with El Dorado altimeter setting. Rwy 18 helicopter visibility reduction below 3/4 SM NA.

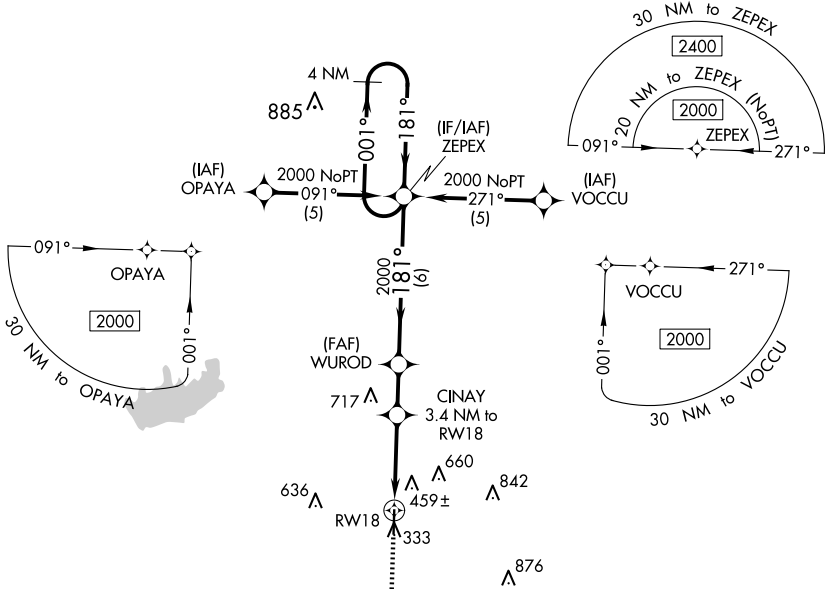
▲ NA

MISSED APPROACH: Climb to 2000 direct REPAE and hold.

AWOS-3  
**118.05**

FORT WORTH CENTER  
**128.2 269.1**

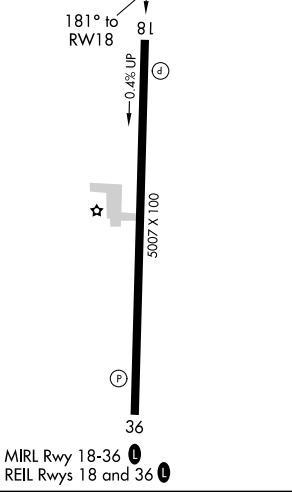
UNICOM  
**122.8 (CTAF) 0**



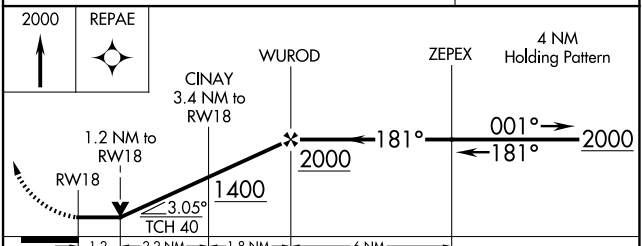
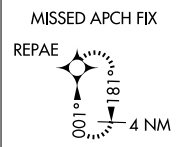
SC-1, 23 JAN 2025 to 20 FEB 2025

SC-1, 23 JAN 2025 to 20 FEB 2025

ELEV 319 | TDZE 314



MIRL Rwy 18-36  
 REIL Rwy 18 and 36



CATEGORY	A	B	C	D
LNAV MDA	980-1	666 (700-1)	980-1 7/8 666 (700-1 7/8)	NA
CIRCLING	980-1	661 (700-1)	980-1 7/8 661 (700-1 7/8)	NA