

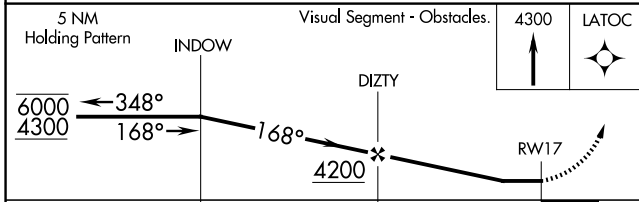
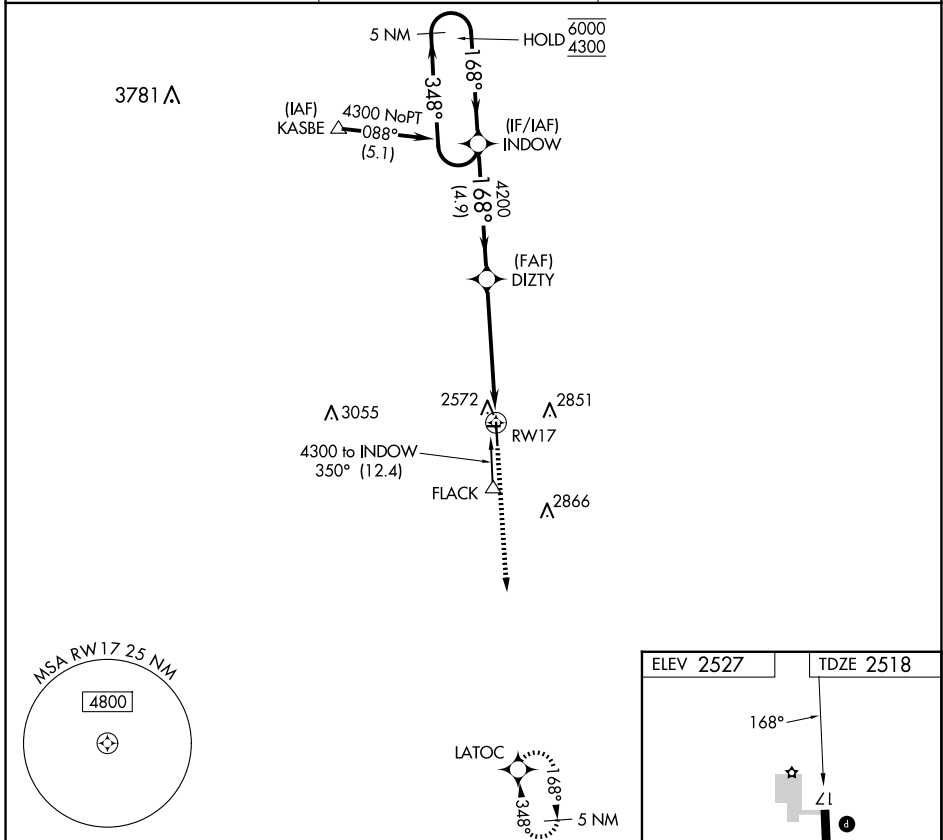
APP CRS	Rwy Idg	4800
168°	TDZE	2518
	Apt Elev	2527

RNAV (GPS) RWY 17

MEADE MUNI (MEJ)

RNP APCH-GPS.	<p>▼ Circling NA to Rwy 8 and 26. Rwy 17 helicopter visibility reduction below 1 SM NA. ▲ NA When local altimeter setting not received, use Liberal altimeter setting and increase all MDAs 140 feet.</p>	MISSED APPROACH: Climb to 4300 direct LATOC and hold.
---------------	--	---

AWOS-3PT 119.425	KANSAS CITY CENTER 134.0 257.625	UNICOM 122.8 (CTAF) 0
----------------------------	--	---------------------------------



CATEGORY	A	B	C	D
LNAV MDA	3100-1	582 (600-1)		NA
CIRCLING	3100-1 573 (600-1)	3160-1 633 (700-1)		NA

