

WAAS CH 63138 W13A	APP CRS 136°	Rwy ldg 3401 TDZE 754 Apt Elev 754
----------------------------------------	------------------------	---------------------------------------------------------------

RNAV (GPS) RWY 13

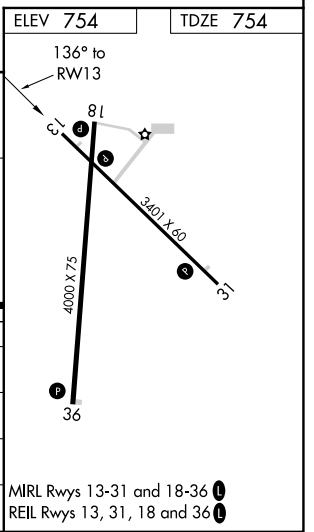
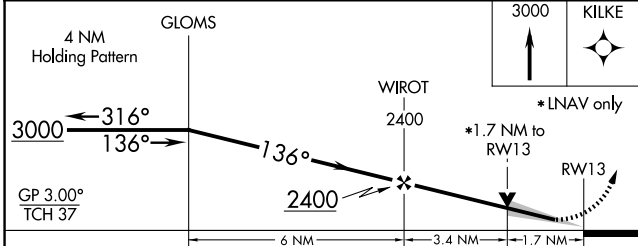
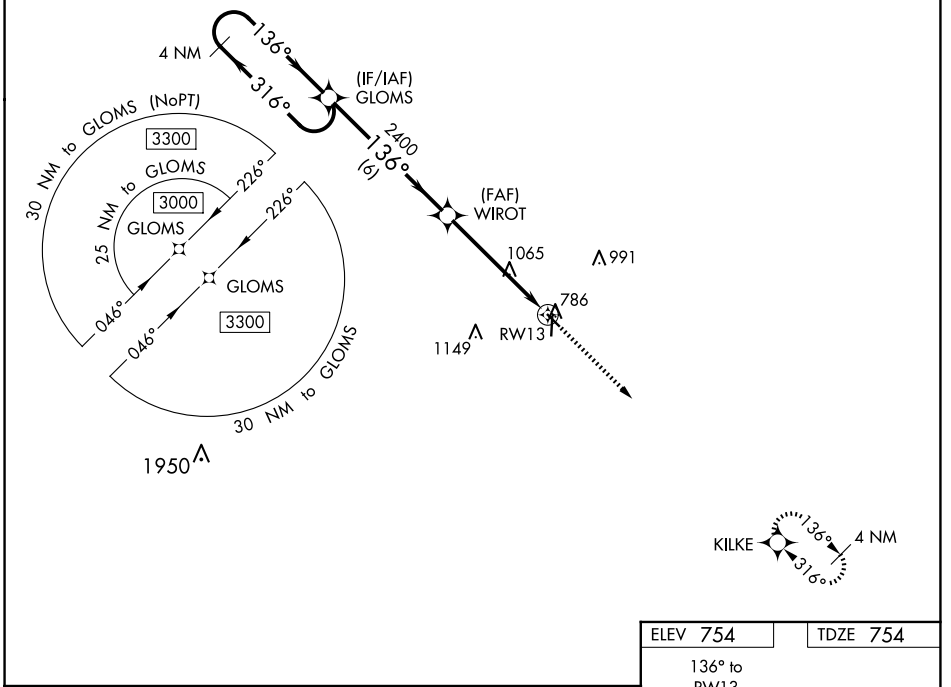
WASHINGTON MUNI (A WG)

RNP APCH.

▼ For uncompensated Baro-VNAV systems, LNAV/VNAV NA below -6°C (22°F) or above 54°C (130°F).
 ▲ Baro-VNAV and VDP NA when using Iowa City altimeter setting. When local altimeter setting not received, use Iowa City altimeter setting; increase LPV DA to 1066 feet, LNAV/VNAV DA to 1282 feet; increase all MDAs 80 feet and visibility LNAV and Circling Cat C ¼ SM.

MISSED APPROACH: Climb to 3000 direct KILKE and hold.

AWOS-3 127.825	CHICAGO CENTER 135.6 370.95	UNICOM 122.7 (CTAF) 0
--------------------------	---------------------------------------	---------------------------------



CATEGORY	A	B	C	D
LPV DA	1004-1 250 (300-1)			NA
LNAV/VNAV DA	1220-1½ 466 (500-1½)			NA
LNAV MDA	1320-1 566 (600-1)	1320-1½ 566 (600-1½)		NA
CIRCLING	1320-1 566 (600-1)	1500-2¼ 746 (800-2¼)		NA

NC-3, 23 JAN 2025 to 20 FEB 2025

NC-3, 23 JAN 2025 to 20 FEB 2025