

VOR/DME FLM 117.0 Chan 117	APP CRS 107°	Rwy Idg TDZE Apt Elev N/A N/A 913
------------------------------------------------	------------------------	-----------------------------------------------------------------------

VOR/DME-A

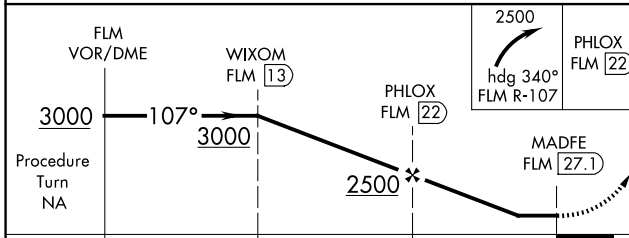
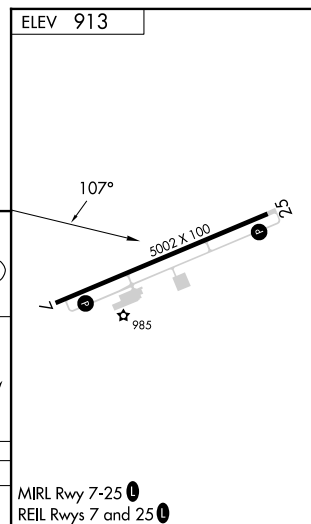
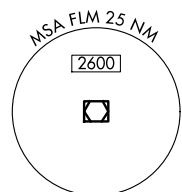
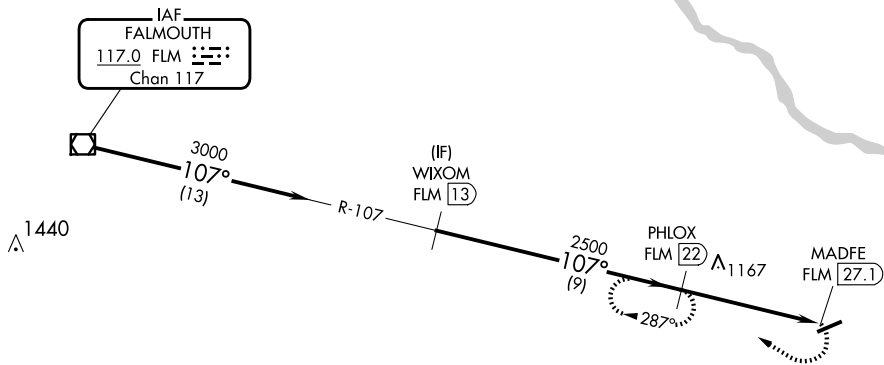
FLEMING-MASON (F'GX)

NA When local altimeter setting not received, use Lexington altimeter setting and increase all MDA 140 feet.

MISSED APPROACH: Climbing right turn to 2500 via heading 340° and FLM VOR/DME R-107 to PHLOX/FLM 22 DME and hold.

AWOS-3 118.125	INDIANAPOLIS CENTER 124.225 360.725	UNICOM 123.0 (CTAF)
--------------------------	-----------------------------------------------	-------------------------------

Procedure NA for arrivals at FLM VOR/DME via airway radials 094 CW 150.



CATEGORY	A	B	C	D
CIRCLING	1900-1¼ 987 (1000-1¼)	1900-1½ 987 (1000-1½)	1900-3	987 (1000-3)

MIRL Rwy 7-25
REIL Rwys 7 and 25

SE-1, 23 JAN 2025 to 20 FEB 2025

SE-1, 23 JAN 2025 to 20 FEB 2025