

| | | | |
|---|------------------------|-----------------------------|---|
| LOC/DME I-FQD 109.55 Chan 32(Y) | APP CRS 009° | Rwy Idg TDZE Apt Elev | 5000 1059 1077 |
|---|------------------------|-----------------------------|---|

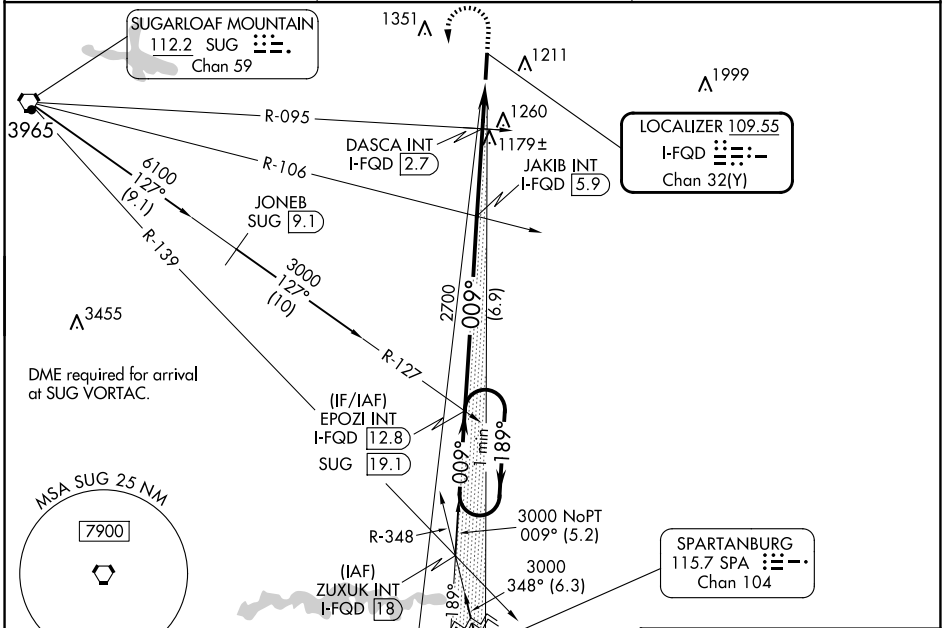
LOC RWY 1

RUTHERFORD COUNTY/MARCHMAN FLD (FQD)

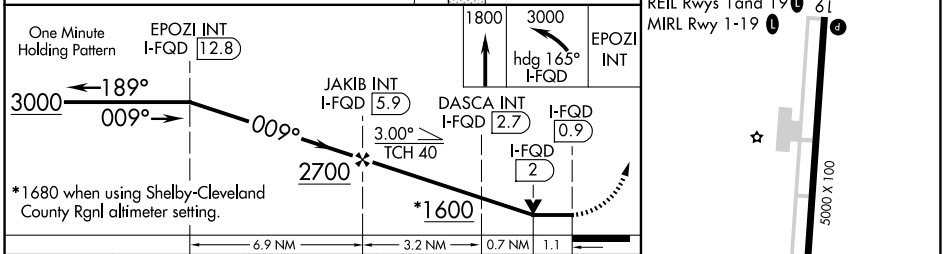
VDP NA with Shelby-Cleveland County Rgnl altimeter setting. When local altimeter setting not received, use Shelby-Cleveland County Rgnl altimeter setting and increase all MDA 80 feet and S-1 Cat C and D and Circling Cat C visibilities $\frac{1}{8}$ mile; increase Circling Cat D visibility $\frac{1}{4}$ mile. DASCAs fix minimums: Increase S-1 Cat C and D and Circling Cat C and D visibilities $\frac{1}{4}$ mile.

MISSED APPROACH: Climb to 1800 then climbing left turn to 3000 on heading 165° and on I-FQD localizer south course to EPOZI INT/I-FQD 12.8 DME and hold.

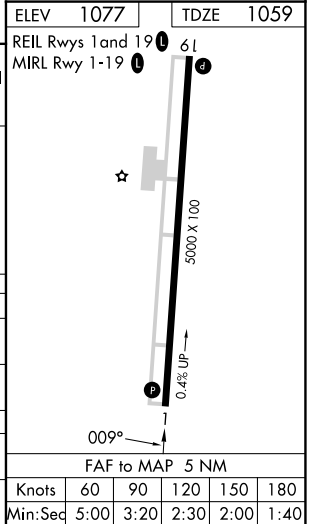
| | | |
|--------------------------|---------------------------------------|---------------------------------|
| AWOS-3 118.275 | GREER APP CON ★ 119.4 350.2 | UNICOM 122.8 (CTAF) 0 |
|--------------------------|---------------------------------------|---------------------------------|



| | |
|-----------|-----------|
| ELEV 1077 | TDZE 1059 |
|-----------|-----------|



| CATEGORY | A | B | C | D |
|---|-----------------------|-----------------------|--|--|
| S-1 | 1600-1 | 541 (600-1) | 1600-1 $\frac{5}{8}$ | 541 (600-1 $\frac{5}{8}$) |
| C CIRCLING | 1600-1 523 (600-1) | 1620-1 543 (600-1) | 1640-1 $\frac{5}{8}$ 563 (600-1 $\frac{5}{8}$) | 1820-2 $\frac{1}{2}$ 743 (800-2 $\frac{1}{2}$) |
| DASCA FIX MINIMUMS (DUAL VOR RECEIVERS OR DME REQUIRED) | | | | |
| S-1 | 1440-1 | 381 (400-1) | 1440-1 $\frac{1}{8}$ | 381 (400-1 $\frac{1}{8}$) |
| C CIRCLING | 1560-1 483 (500-1) | 1620-1 543 (600-1) | 1640-1 $\frac{1}{2}$ 563 (600-1 $\frac{1}{2}$) | 1820-1 $\frac{1}{2}$ 743 (800-1 $\frac{1}{2}$) |



LOC RWY 1

SE-2, 23 JAN 2025 to 20 FEB 2025

SE-2, 23 JAN 2025 to 20 FEB 2025