

CAMP MACKALL, NORTH CAROLINA

# RNAV (GPS) RWY 30

WAAS CH 51219 W30A	APCH CRS 298°	Rwy ldg TDZE 4794 352	Arprt Elev 376
--------------------------	------------------	-----------------------------	-------------------

AL-6315 (USA)

MACKALL AAF (KHFF)

RNP APCH-GPS	MISSED APPROACH: Climb to 2400 direct AAMMO and hold.
RADAR required when special use space active.	
* When tower closed, increase vis to 1 mile.	

D-ATIS 141.4	FAYETTEVILLE APP CON/DEP CON 127.8 343.725	TOWER* 121.0 (CTAF) 254.4	GND CON 128.35 251.05
-----------------	---	------------------------------	--------------------------

\*\* Circling NA to RWYs 4, 16, 22, and 34.

A531

689  
907  
4 NM

RWY 30 helicopter visibility reduction below 3/4 mile NA.

Baro-VNAV NA when using Simmons AAF altimeter setting.

For uncompensated Baro-VNAV systems, LNAV/VNAV NA below -15°C or above 54°C.

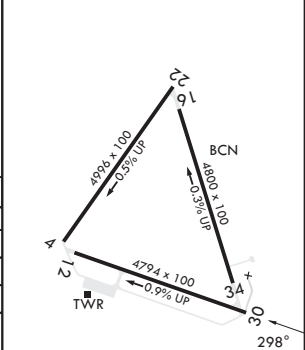
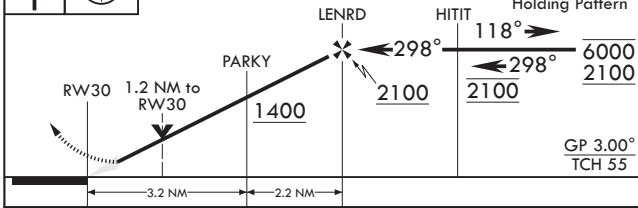
When local altimeter setting not received, use Simmons AAF altimeter setting.

VDP NA with Simmons altimeter setting.

Additional restrictions are in effect when restricted areas are active.

30NM to MABOZ 3200  
25NM to MABOZ 2200  
MABOZ  
118°  
208°  
R5311A  
R5311B  
R5311C  
(IAF) MABOZ 2200  
HITIT 2100  
11NM to HITIT (NOPT)  
30NM to HITIT  
2100 NoPT 208° (8)  
4 NM  
2400  
36 PARKY  
RW30 478  
559°  
745  
2100 NoPT 118°  
(FAF) LENRD  
(IF/IAF) HITIT  
HOLD 6000 2100  
1043  
2100 NoPT 028° (8)  
(IAF) KEFFR  
30NM to KEFFR  
118°  
028°  
2100  
KEFFR

2400	AAMMO	ELEV 376	TDZE 352
------	-------	----------	----------



CATEGORY	A	B	C	D
LPV DA*	602-3/4	250	(300-3/4)	
LNAV/VNAV DA	793-1 1/8	441	(500-1%)	
LNAV MDA	760-1 408 (400-1)	760-1 1/8 408 (400-1 1/8)		
<b>C</b> CIRCLING**	860-1 484 (500-1)	880-1 504 (600-1)	980-1 1/4 604 (700-1 1/4)	1040-2 664 (700-2)
SIMMONS AAF ALTIMETER SETTING MINIMUMS				
LPV DA	686-1	334	(400-1)	
LNAV/VNAV DA	860-1 1/8	508	(500-1%)	
LNAV MDA	860-1 508 (500-1)	860-1 1/8 508 (500-1%)		
<b>C</b> CIRCLING**	960-1 584 (600-1)	980-1 604 (700-1)	1080-2 704 (800-2)	1140-2 1/2 764 (800-2 1/2)

MIRL Rwy 12-30

CAMP MACKALL, NORTH CAROLINA

35°02'N - 79°30'W

MACKALL AAF (KHFF)

Amdt 1 07SEP23

# RNAV (GPS) RWY 30

SE-2, 23 JAN 2025 to 20 FEB 2025

SE-2, 23 JAN 2025 to 20 FEB 2025