

WAAS CH <b>58235</b> <b>W02A</b>	APP CRS <b>020°</b>	Rwy Idg TDZE <b>957</b> Apt Elev <b>969</b>	<b>5500</b> <b>957</b> <b>969</b>
--	------------------------	---	---

# RNAV (GPS) RWY 2

CULLMAN RGNL/FOLSOM FLD (CMD)

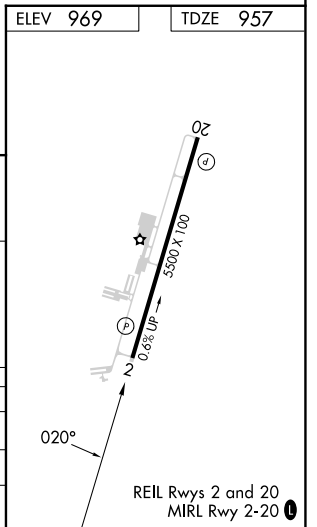
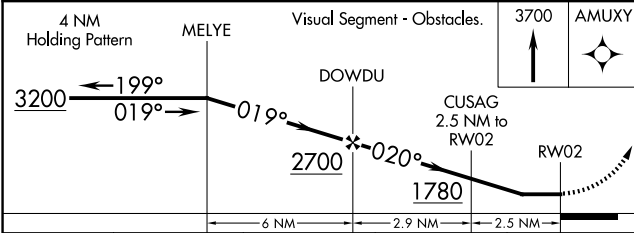
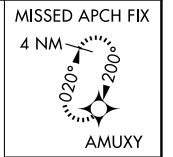
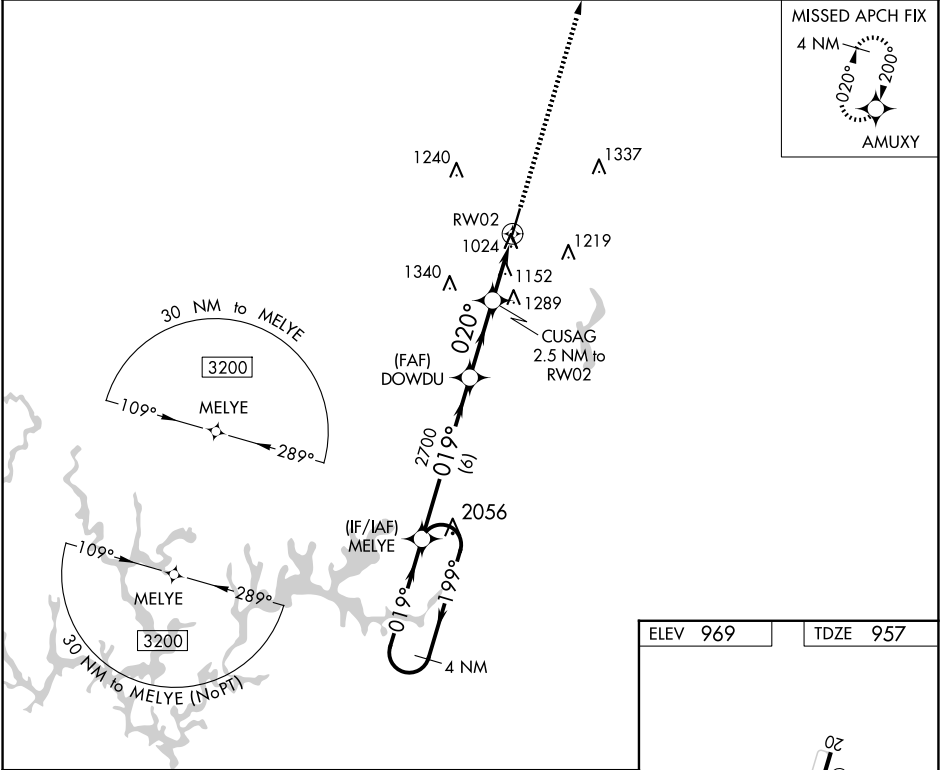
**⚠** DME/DME RNP-0.3 NA. When local altimeter setting not received, use Huntsville Int-Carl T Jones Fld altimeter setting and increase all MDA 100 feet, and increase LP, LNAV Cat C and D visibility  $\frac{3}{8}$  SM, increase Circling Cat C and D visibility  $\frac{1}{4}$  SM. Rwy 2 helicopter visibility reduction below 1 SM NA. Straight-in and Circling Rwy 2 NA at night.

**MISSED APPROACH:**  
Climb to 3700 direct AMUXY and hold.

AWOS-3PT  
**124.175**

HUNTSVILLE APP CON★  
**118.05 239.0**

UNICOM  
**122.8 (CTAF) 0**



SE-4, 23 JAN 2025 to 20 FEB 2025

SE-4, 23 JAN 2025 to 20 FEB 2025