

WAAS CH 50514 W20A	APP CRS 200°	Rwy Idg 5500 TDZE 969 Apt Elev 969
--	------------------------	---

RNAV (GPS) RWY 20

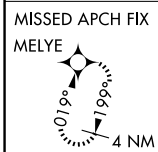
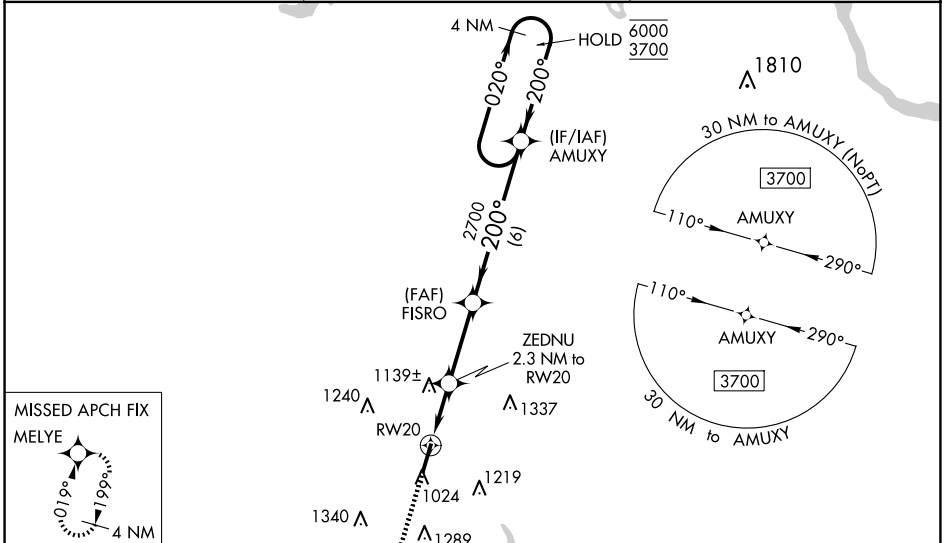
CULLMAN RGNL/FOLSOM FLD (CMD)

RNP APCH - GPS.

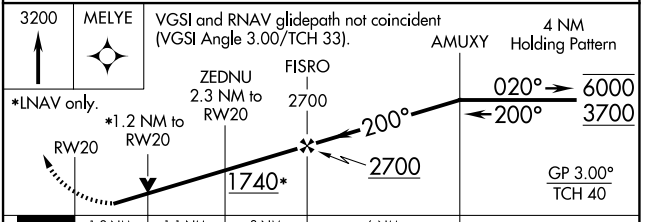
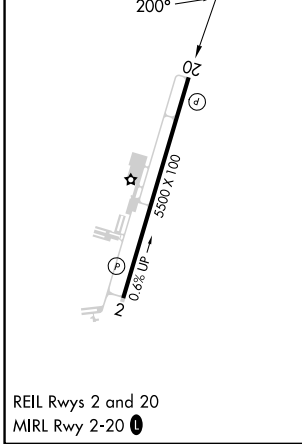
⚠ Circling Rwy 2 NA at night. Baro-VNAV and VDP NA when using Huntsville Intl-Carl T Jones Fld altimeter setting. Rwy 20 helicopter visibility reduction below $\frac{3}{4}$ SM NA. For uncompensated Baro-VNAV systems, LNAV/VNAV NA below -16°C or above 54°C. When local altimeter setting not received, use Huntsville Intl-Carl T Jones Fld altimeter setting and increase LPV DA to 1320 feet, LNAV/VNAV DA to 1479 feet, and increase all MDA 120 feet; increase LPV all Cats visibility $\frac{1}{4}$ SM, LNAV/VNAV all Cats visibility $\frac{1}{4}$ SM, LNAV Cat C, D visibility $\frac{3}{8}$ SM and Circling Cat C $\frac{1}{2}$ SM, Cat D $\frac{1}{4}$ SM.

MISSED APPROACH:
Climb to 3200 direct MELYE and hold.

AWOS-3PT 124.175	HUNTSVILLE APP CON* 118.05 239.0	UNICOM 122.8 (CTAF) 0
----------------------------	--	---------------------------------



ELEV 969	TDZE 969
-----------------	-----------------



CATEGORY	A	B	C	D
LPV DA		1219- $\frac{3}{4}$	250 (300- $\frac{3}{4}$)	
LNAV/VNAV DA		1378-1 $\frac{1}{8}$	409 (500-1 $\frac{1}{8}$)	
LNAV MDA	1400-1	431 (500-1)	1400-1 $\frac{1}{4}$	431 (500-1 $\frac{1}{4}$)
C CIRCLING	1420-1 451 (500-1)	1500-1 531 (600-1)	1600-1 $\frac{3}{4}$ 631 (700-1 $\frac{3}{4}$)	1640-2 $\frac{1}{4}$ 671 (700-2 $\frac{1}{4}$)

SE-4, 23 JAN 2025 to 20 FEB 2025

SE-4, 23 JAN 2025 to 20 FEB 2025