

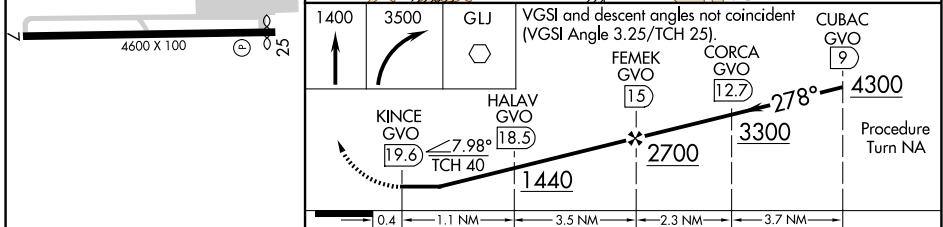
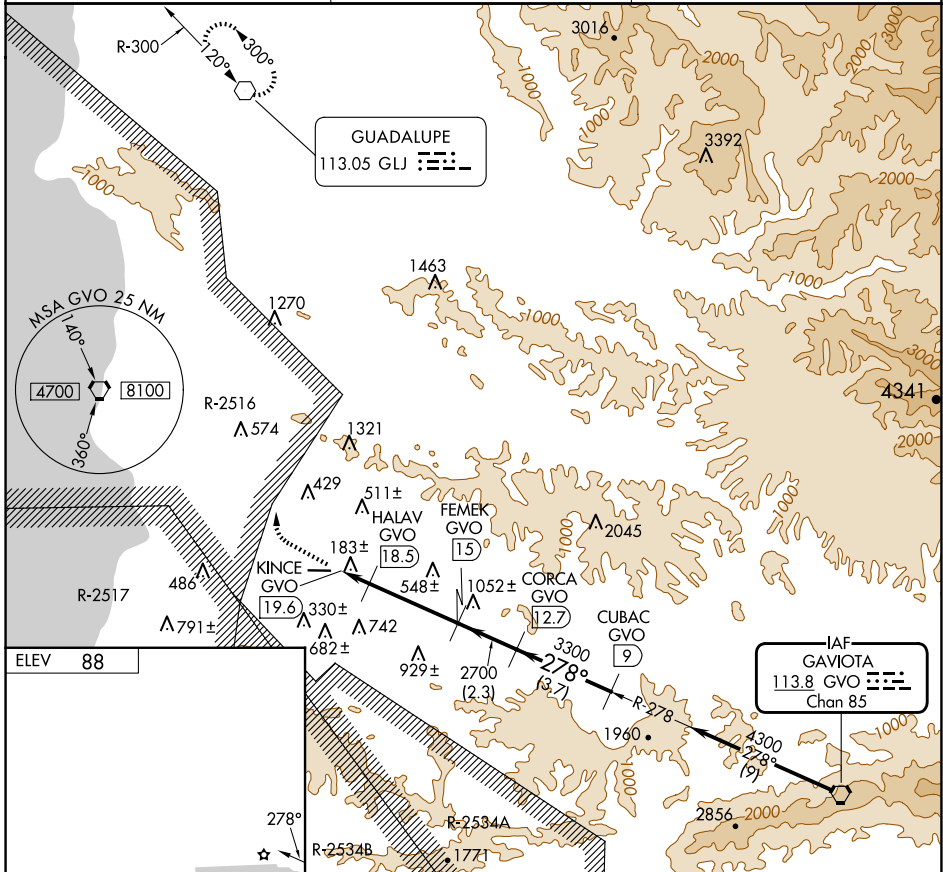
VORTAC GVO 113.8 Chan 85	APP CRS 278°	Rwy Idg TDZE Apt Elev	N/A N/A 88
---------------------------------------	------------------------	-----------------------------	---------------------------------------

VOR/DME-A LOMPOC (LPC)

Procedure NA at night.

MISSED APPROACH: Climb to 1400, then climbing right turn to 3500 direct GLJ VOR and hold.

AWOS-3PT 133.875	SANTA BARBARA APP CON* 124.15 327.8	UNICOM 122.7 (CTAF)
----------------------------	---	-------------------------------



REIL Rwy 25	MIRL Rwy 7-25	CATEGORY	
		A	B
		1340-1¼ 1252 (1300-1¼)	1340-1½ 1252 (1300-1½)
		CIRCLING	
		NA	

SW-3, 23 JAN 2025 to 20 FEB 2025

SW-3, 23 JAN 2025 to 20 FEB 2025