

APP CRS	Rwy Idg	3244
004°	TDZE	125
	Apt Elev	125

RNAV (GPS) RWY 36

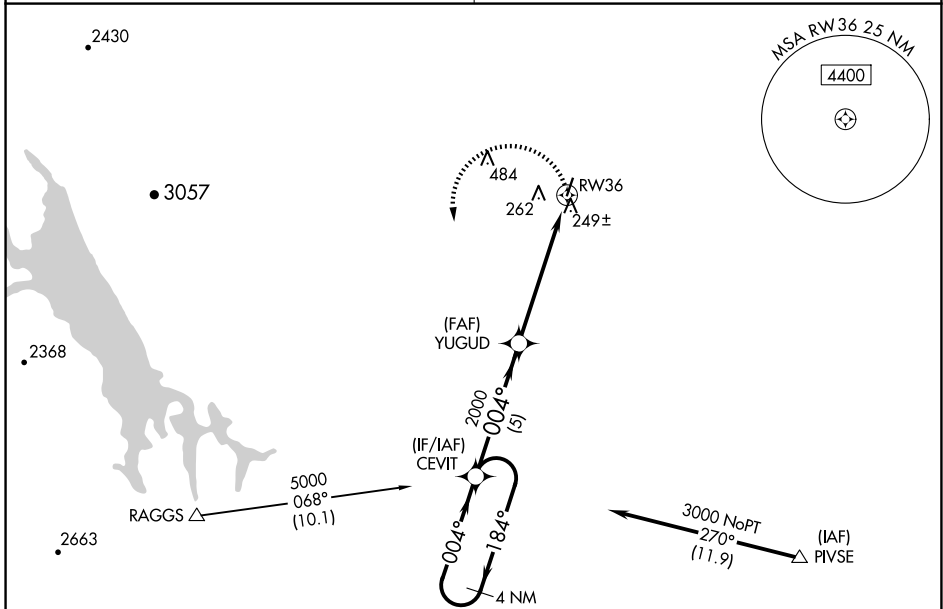
WATTS-WOODLAND (O41)

NA DME/DME RNP-0.3 NA.
 Procedure NA at night.
 Use Sacramento Infil altimeter setting; when not received, use Sacramento Exec altimeter setting and increase all MDA 20 feet.

MISSED APPROACH: Climbing left turn to 3000 direct CEVIT and hold.

TRAVIS APP CON
126.6 281.45

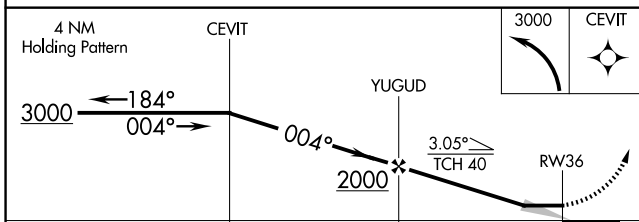
UNICOM
122.8 (CTAF) 0



SW-2, 23 JAN 2025 to 20 FEB 2025

SW-2, 23 JAN 2025 to 20 FEB 2025

ELEV 125 **D** TDZE 125



CATEGORY	A	B	C	D
LNVA MDA	560-1	435 (500-1)		NA
CIRCLING	620-1	495 (500-1)		NA