

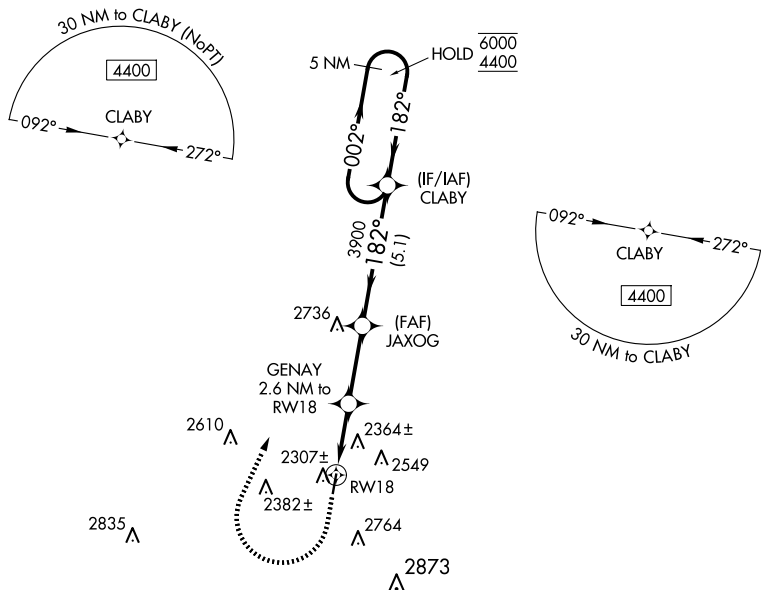
WAAS CH 72645 W18A	APP CRS 182°	Rwy Idg TDZE 2140 Apt Elev 2140	3944 2140 2140
--	------------------------	---	---

RNAV (GPS) RWY 18

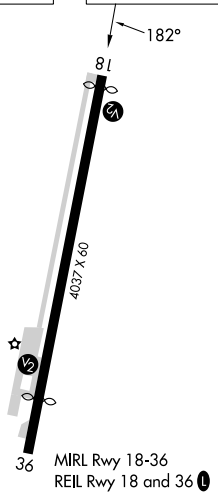
SONORA MUNI (SOA)

RNP APCH-GPS.	MISSED APPROACH: Climb to 2700 then climbing right turn to 4400 direct CLABY and hold.
---------------	--

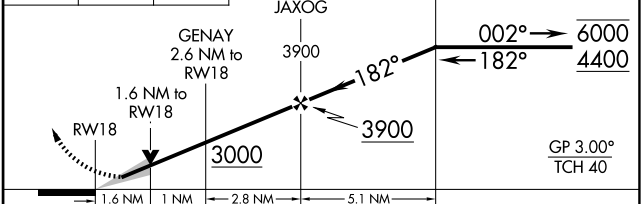
AWOS-3 118.075	HOUSTON CENTER 125.75 346.4	UNICOM 122.8 (CTAF) 0
--------------------------	---------------------------------------	---------------------------------



ELEV 2140	TDZE 2140
------------------	------------------



2700	4400	CLABY	VGSI and RNAV glidepath not coincident (VGSI Angle 3.00/TCH 25).
------	------	-------	--



CATEGORY	A	B	C	D
LPV DA	2425-1	285 (300-1)		NA
LNAV/VNAV DA	2691-1 $\frac{5}{8}$	551 (600-1 $\frac{5}{8}$)		NA
LNAV MDA	2680-1	540 (600-1)		NA
CIRCLING	3040-1 $\frac{1}{4}$ 900 (900-1 $\frac{1}{4}$)	3080-1 $\frac{1}{4}$ 940 (1000-1 $\frac{1}{4}$)		NA

SC-3, 23 JAN 2025 to 20 FEB 2025

SC-3, 23 JAN 2025 to 20 FEB 2025