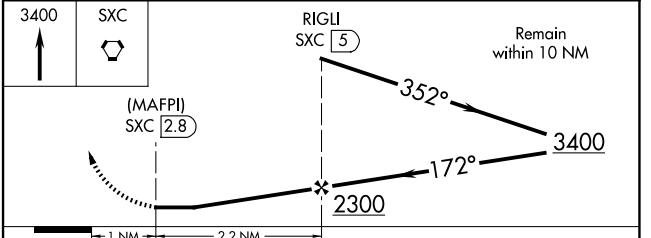
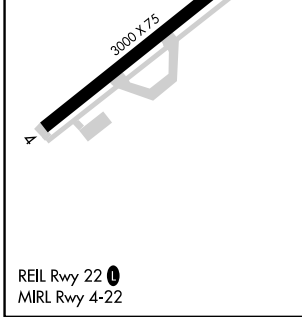
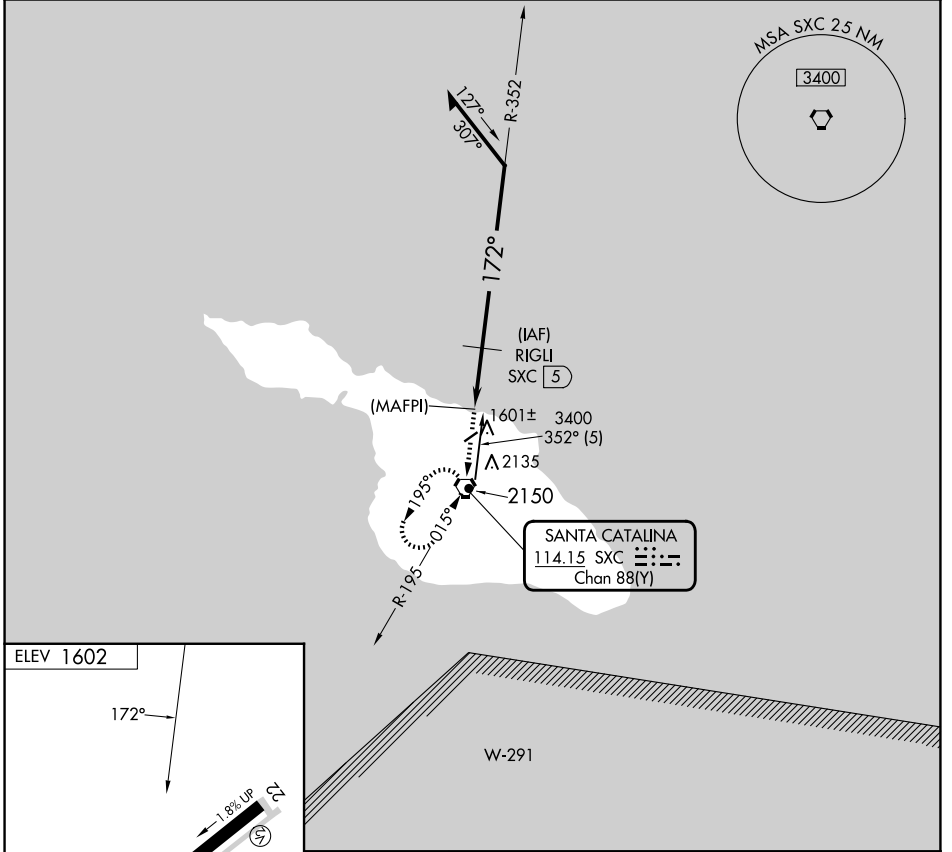


VORTAC SXC <b>114.15</b> Chan <b>88(Y)</b>	APP CRS <b>172°</b>	Rwy Idg TDZE Apt Elev <b>N/A</b> <b>N/A</b> <b>1602</b>
--	------------------------	--

# VOR/DME or GPS-B CATALINA (AVX)

<b>NA</b> Circling southeast runway 4-22 not authorized.	MISSED APPROACH: Climb to 3400 direct SXC VORTAC and hold.
--	--

ASOS <b>120.675</b>	SOCAL APP CON <b>127.4 323.275</b>	UNICOM <b>122.7 (CTAF)</b>
------------------------	---------------------------------------	-------------------------------



CATEGORY	A	B	C	D
CIRCLING	2220-1	618 (700-1)	NA	

SW-3, 23 JAN 2025 to 20 FEB 2025

SW-3, 23 JAN 2025 to 20 FEB 2025