

APP CRS	Rwy Idg	3013
167°	TDZE	13
	Apt Elev	13

RNAV (GPS) RWY 17

DARE COUNTY RGNL (MQI)

RNP APCH - GPS.

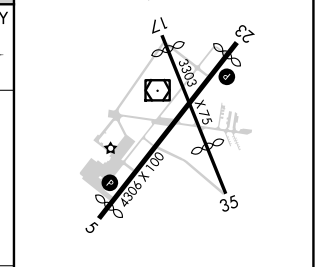
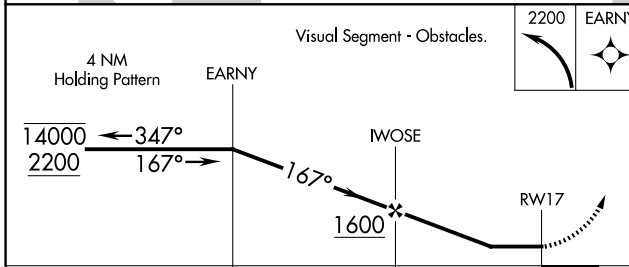
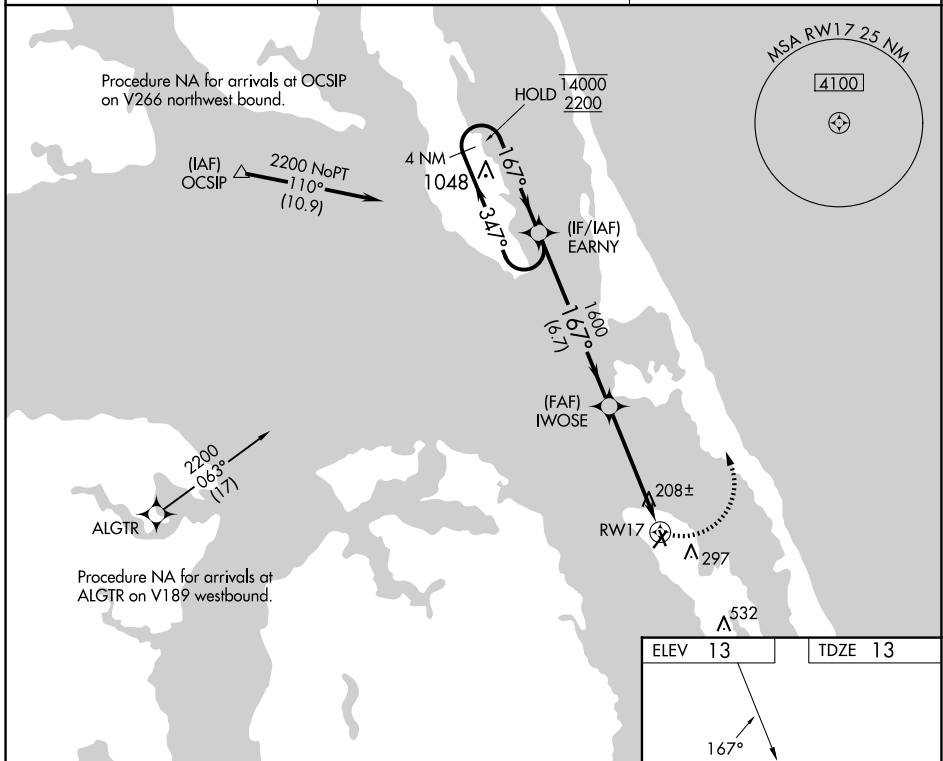
⚠ Circling Rwy 23, 35 NA at night. Rwy 17 helicopter visibility reduction below 1 SM NA. Straight-in and Circling Rwy 17 NA at night.

MISSED APPROACH: Climbing left turn to 2200 direct EARNY and hold.

AWOS-3
128.275

CHERRY POINT APP CON
124.725 350.35

UNICOM
122.8 (CTAF) 0



CATEGORY	A	B	C	D
LNAV MDA	460-1	447 (500-1)	460-1 ³ / ₈ 447 (500-1 ³ / ₈)	NA
C CIRCLING	600-1	587 (600-1)	600-1 ¹ / ₂ 587 (600-1 ¹ / ₂)	NA

ELEV 13 | TDZE 13

REIL Rwy 5 and 23 0

MIRL Rwy 5-23 and 17-35 0

SE-2, 23 JAN 2025 to 20 FEB 2025

SE-2, 23 JAN 2025 to 20 FEB 2025