

APP CRS	Rwy Idg	4005
227°	TDZE	12
	Apt Elev	13

RNAV (GPS) RWY 23

DARE COUNTY RGNL (MQI)

RNP APCH - GPS.

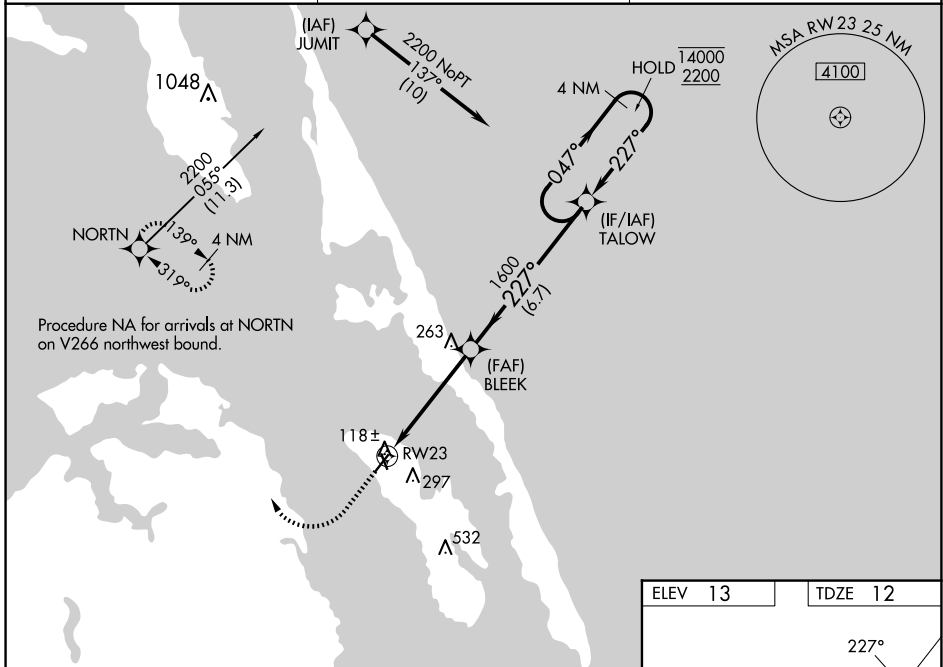
⚠
⚠ Circling Rwy 17, 35 NA at night. Rwy 23 helicopter visibility reduction below 1 SM NA. Straight-in/Circling Rwy 23 NA at night.

MISSED APPROACH: Climb to 600 then climbing right turn to 4000 direct NORTN and hold, continue climb-in-hold to 4000.

AWOS-3
128.275

CHERRY POINT APP CON
124.725 350.35

UNICOM
122.8(CTAF) 1

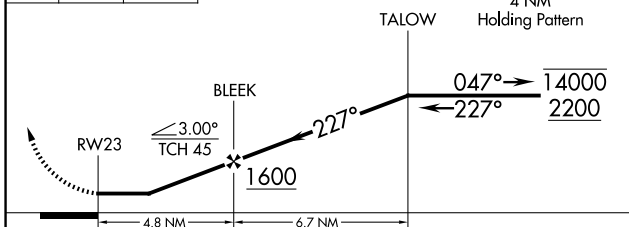


SE-2, 23 JAN 2025 to 20 FEB 2025

SE-2, 23 JAN 2025 to 20 FEB 2025

600 4000 NORTN

VGSI and descent angles not coincident (VGSI Angle 4.00/TCH 32).



ELEV 13	TDZE 12
---------	---------

REIL Rwy 5 and 23 1
MIRL Rwy 5-23 and 17-35 1

CATEGORY	A	B	C	D
LNVA MDA	520-1 508 (600-1)		520-1 ³ / ₈ 508 (600-1 ³ / ₈)	NA
C CIRCLING	600-1 587 (600-1)		600-1 ¹ / ₂ 587 (600-1 ¹ / ₂)	NA