

| | | | |
|--|------------------------|-----------------------------|---|
| WAAS CH 72739 W21A | APP CRS 204° | Rwy Idg TDZE Apt Elev | 4500 157 160 |
|--|------------------------|-----------------------------|---|

RNAV (GPS) RWY 21

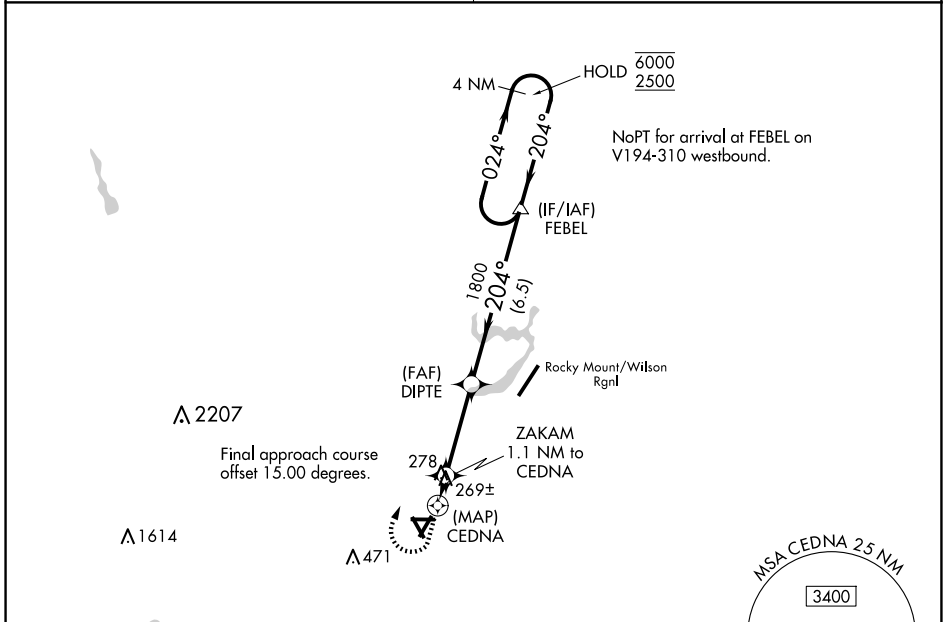
WILSON INDUSTRIAL AIR CENTER (W03)

RNP APCH.

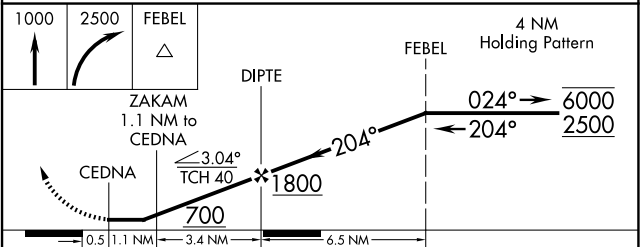
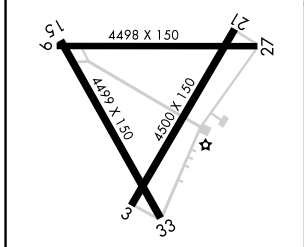
⚠ Circling Rwy 9, 15, 27, 33 NA at night. Obtain local altimeter setting on CTAF; when not received, use Rocky Mount altimeter setting and increase all MDA 20 feet; increase LP Cats C and D visibility 1/8 SM. Rwy 21 helicopter visibility reduction below 3/4 SM NA.

⚠ NA MISSED APPROACH: Climb to 1000, then climbing right turn to 2500 direct FEBEL and hold.

| | |
|---|--------------------------------|
| WASHINGTON CENTER 123.85 279.65 | UNICOM 123.0(CTAF) 0 |
|---|--------------------------------|



| | |
|----------|----------|
| ELEV 160 | TDZE 157 |
|----------|----------|



| | | | | |
|-------------------|-------------------|-------------|---|----------------------------|
| CATEGORY | A | B | C | D |
| LP MDA | 520-1 363 (400-1) | | | |
| LNAV MDA | 540-1 | 383 (400-1) | 540-1 $\frac{1}{8}$ | 383 (400-1 $\frac{1}{8}$) |
| C CIRCLING | 660-1 | 500 (500-1) | 780-1 $\frac{3}{4}$ 620 (700-1 $\frac{3}{4}$) | 780-2 620 (700-2) |

REIL Rws 3 and 21 **0**
MIRL Rwy 3-21 **0**

SE-2, 23 JAN 2025 to 20 FEB 2025

SE-2, 23 JAN 2025 to 20 FEB 2025