

WAAS CH <b>72630</b> <b>W11A</b>	APP CRS <b>111°</b>	Rwy Idg TDZE Apt Elev	<b>5001</b> <b>1152</b> <b>1171</b>
--	------------------------	-----------------------------	---

# RNAV (GPS) RWY 11

IOWA COUNTY (MRJ)

RNP APCH - GPS

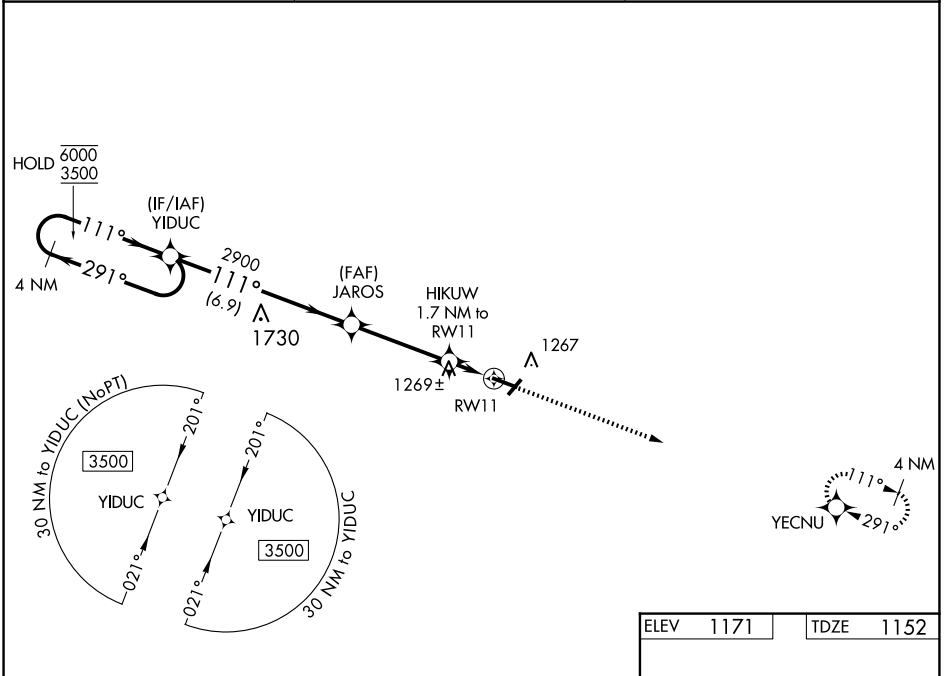
**⚠** Baro-VNAV and VDP NA when using Platteville altimeter setting. For uncompensated Baro-VNAV systems, LNAV/VNAV NA below -17°C or above 54°C. When local altimeter setting not received, use Platteville altimeter setting and increase LPV and LNAV/VNAV DA to 1457 feet; increase all MDAs 60 feet and LNAV visibility Cat C ¼ SM.

**MISSED APPROACH:**  
Climb to 3600 direct YECNU and hold.

AWOS-3  
**118.525**

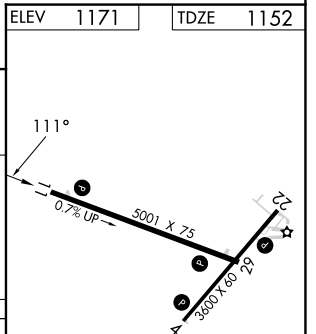
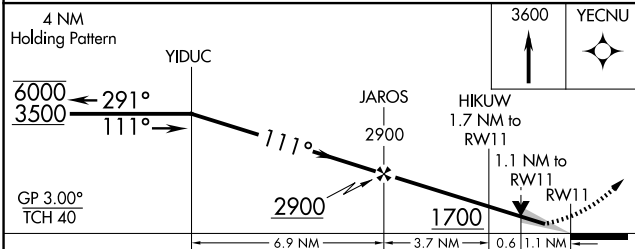
CHICAGO CENTER  
**133.95 281.4**

UNICOM  
**122.8 (CTAF) 0**



EC-3, 23 JAN 2025 to 20 FEB 2025

EC-3, 23 JAN 2025 to 20 FEB 2025



CATEGORY	A	B	C	D
LPV DA	1402-1	250 (300-1)		NA
LNAV/VNAV DA	1402-1	250 (300-1)		NA
LNAV MDA	1520-1	368 (400-1)		NA
CIRCLING	1620-1 449 (500-1)	1640-1 469 (500-1)	1640-1½ 469 (500-1½)	NA

MIRL Rwy 4-22 and 11-29 0