

WAAS CH 93530 W04A	APP CRS 040°	Rwy Idg TDZE Apt Elev	3600 1168 1171
--	------------------------	-----------------------------	---

RNAV (GPS) RWY 4

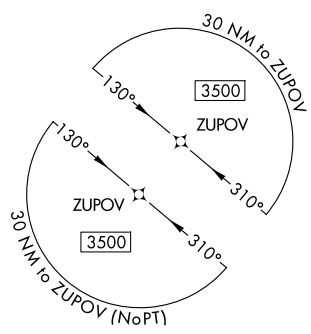
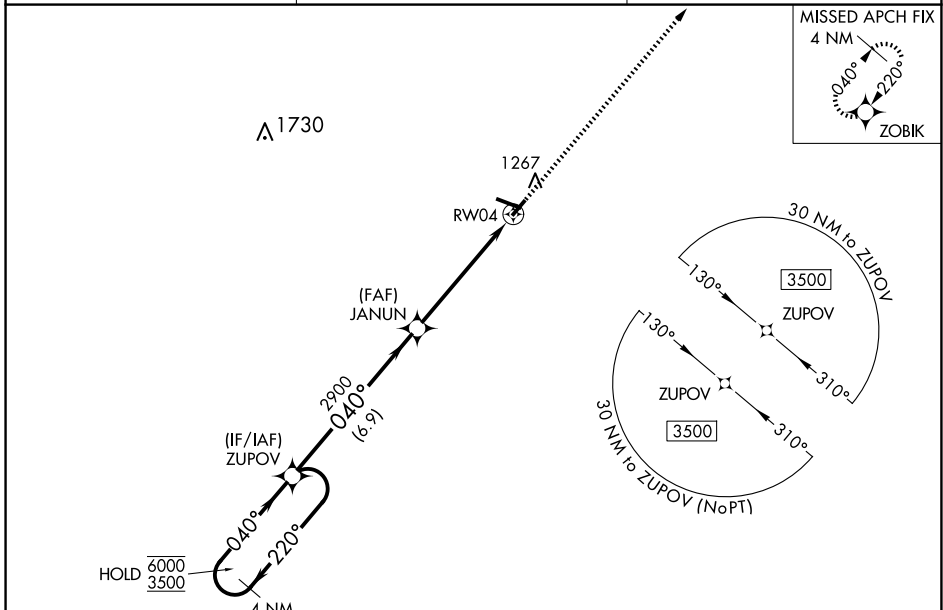
IOWA COUNTY (MRJ)

RNP APCH - GPS.

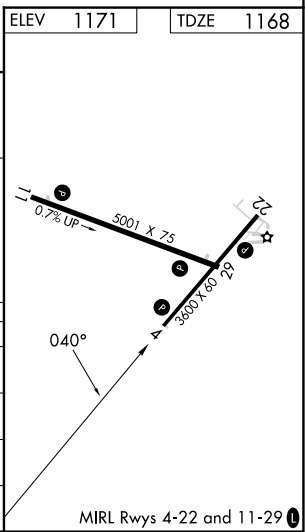
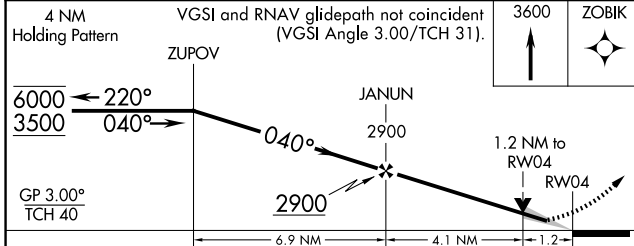
⚠ Baro-VNAV and VDP NA when using Platteville altimeter setting. For uncompensated Baro-VNAV systems, LNAV/VNAV NA below -17°C or above 54°C. When local altimeter setting not received, use Platteville altimeter setting and increase LPV DA to 1473 feet, increase LNAV/VNAV DA to 1498 feet, increase all MDAs 60 feet, and LNAV visibility Cat C ¼ SM.

MISSED APPROACH: Climb to 3600 direct ZOBIK and hold.

AWOS-3 118.525	CHICAGO CENTER 133.95 281.4	UNICOM 122.8 (CTAF) 0
--------------------------	---------------------------------------	---------------------------------



ELEV 1171	TDZE 1168
-----------	-----------



CATEGORY	A	B	C	D
LPV DA	1418-1	250 (300-1)		NA
LNAV/VNAV DA	1443-1	275 (300-1)		NA
LNAV MDA	1580-1	412 (500-1)	1580-1 1/8 412 (500-1 1/8)	NA
CIRCLING	1620-1 449 (500-1)	1640-1 469 (500-1)	1640-1 1/2 469 (500-1 1/2)	NA

EC-3, 23 JAN 2025 to 20 FEB 2025

EC-3, 23 JAN 2025 to 20 FEB 2025

MIRL Rwy 4-22 and 11-29 0