

WAAS CH <b>86935</b> <b>W01A</b>	APP CRS <b>009°</b>	Rwy Idg TDZE Apt Elev	<b>5007</b> <b>499</b> <b>499</b>
--	------------------------	-----------------------------	---

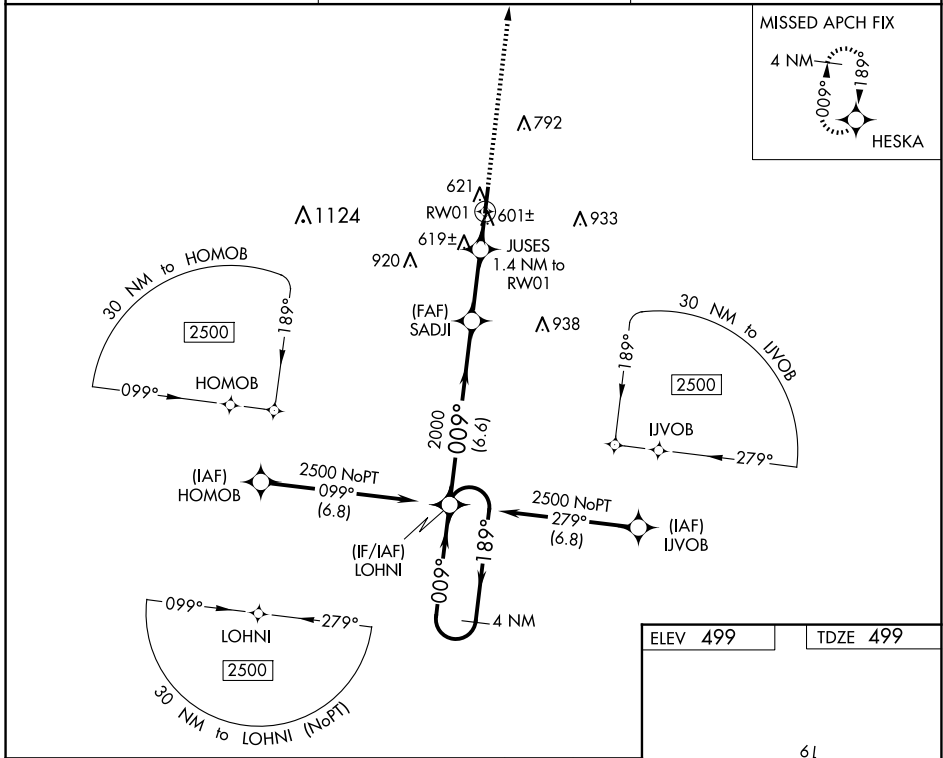
# RNAV (GPS) RWY 1

WILLIAM L WHITEHURST FLD (M08)

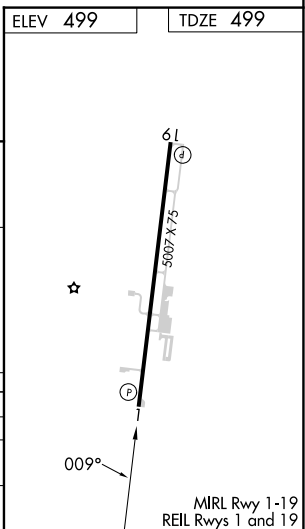
**⚠ NA** DME/DME RNP-0.3 NA. When local altimeter setting not received, use Jackson altimeter setting and increase all MDA 80 feet, increase LP Cats C/D visibilities  $\frac{3}{8}$  mile, and LNAV Cats C/D and Circling Cats C/D visibilities  $\frac{1}{4}$  mile. Rwy 1 helicopter visibility reduction below 1 SM NA.

MISSED APPROACH: Climb to 2500 direct HESKA and hold.

AWOS-3 <b>121.125</b>	MEMPHIS CENTER <b>124.35 318.1</b>	UNICOM <b>123.0 (CTAF)</b>
--------------------------	---------------------------------------	-------------------------------



CATEGORY		A	B	C	D
LP	MDA	860-1 361 (400-1)			
LNAV	MDA	880-1	381 (400-1)	880-1 $\frac{1}{8}$	381 (400-1 $\frac{1}{8}$ )
<b>C</b>	CIRCLING	980-1	481 (500-1)	1100-1 $\frac{3}{4}$ 601 (700-1 $\frac{3}{4}$ )	1360-2 $\frac{3}{4}$ 861 (900-2 $\frac{3}{4}$ )



SE-1, 23 JAN 2025 to 20 FEB 2025

SE-1, 23 JAN 2025 to 20 FEB 2025

MIRL Rwy 1-19  
REIL Rwys 1 and 19