

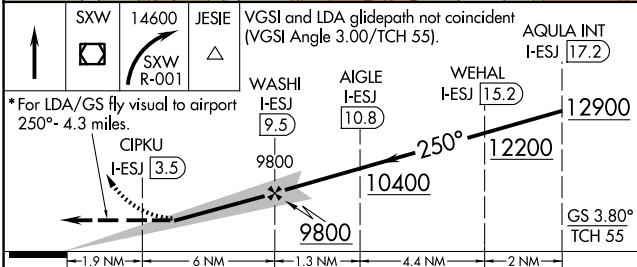
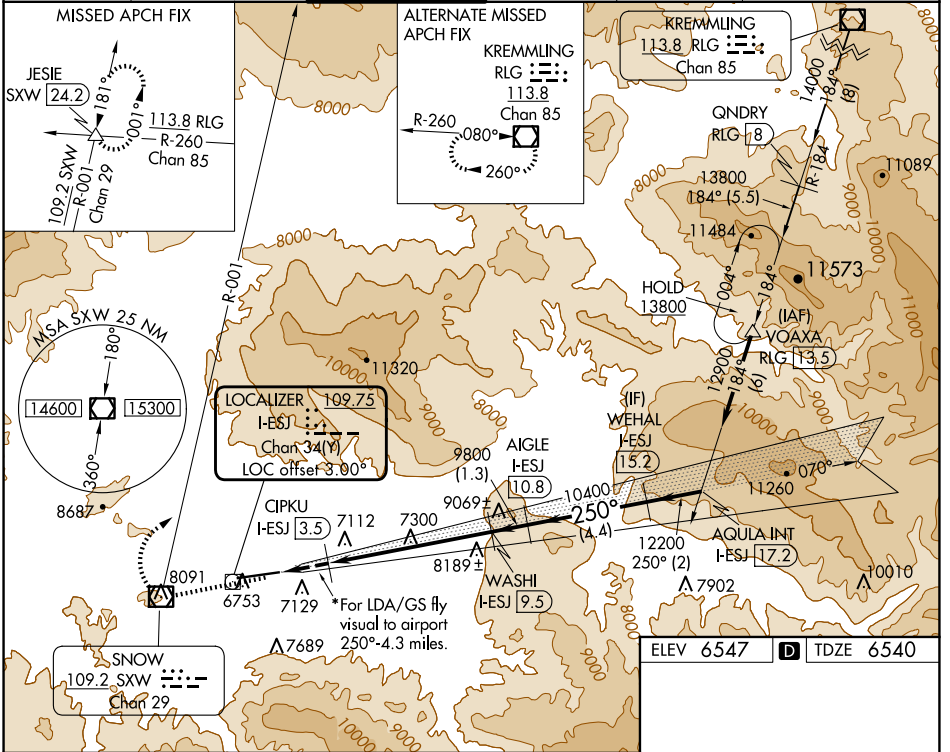
LOC/DME I-ESJ 109.75 Chan 34 (Y)	APP CRS 250°	Rwy Idg 8000 TDZE 6540 Apt Elev 6547
--	------------------------	---

LDA RWY 25

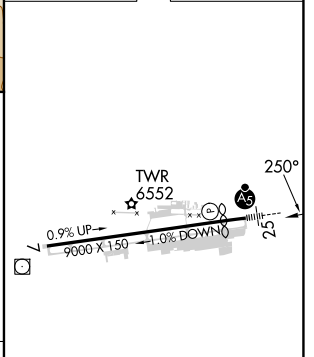
EAGLE COUNTY RGNL (EGE)

DME required.	MALSR	MISSED APPROACH: Climb direct SWX VOR/DME, cross SWX VOR/DME, then climbing right turn to 14600 on SWX VOR/DME R-001 to JESIE SWX 24.2 DME and hold, continue climb-in-hold to 14600. *Missed approach requires minimum climb of 275 feet per NM to 11700.
<p>Inoperative table does not apply. At night increase LDA/GS visibility to 5 SM. Fly visual to airport authorized during day only.</p> <p>-20°C</p>		

ATIS 135.575	DENVER CENTER 128.65 282.2	EAGLE TOWER ★ 119.8 (CTAF)	GND CON 121.8	CLNC DEL 124.75	DENVER CLNC DEL 124.75 (When tower closed)
------------------------	--------------------------------------	--------------------------------------	-------------------------	---------------------------	---



ELEV 6547		TDZE 6540
-----------	--	-----------



CATEGORY	A	B	C	D
S-LDA/GS 25*	8330-3 1790 (1800-3)			NA
S-LDA 25	8620-2½ 2080 (2100-2½)		8620-3 2080 (2100-3)	NA

HIRL Rwy 7-25

REIL Rwy 7

SW-1, 23 JAN 2025 to 20 FEB 2025

SW-1, 23 JAN 2025 to 20 FEB 2025