

RNAV (RNP) Z RWY 25

EAGLE COUNTY RGNL (EGE)

APP CRS	Rwy Idg	8000
253°	TDZE	6540
	Apt Elev	6547

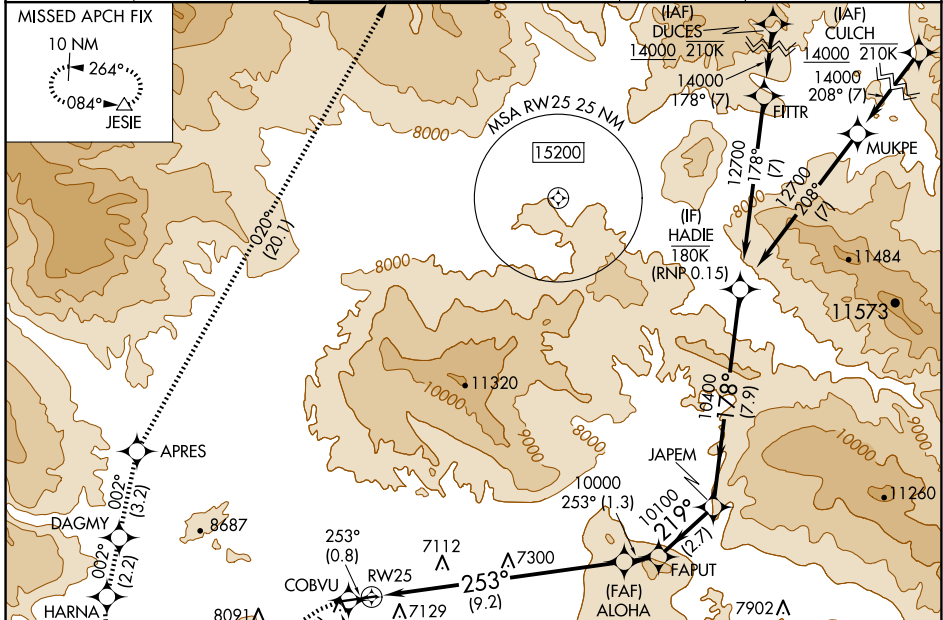
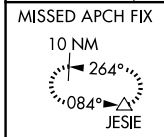
RNP AR APCH-GPS, RF, MIN RNP 0.11. Authorization required. Missed approach requires RNP <1.00.

⚠ When local climeter setting not received, procedure NA. For uncompensated Baro-VNAV systems, procedure NA below -27°C or above 33°C. For inop ALS increase RNP 0.11* all visibilities to ½ SM.

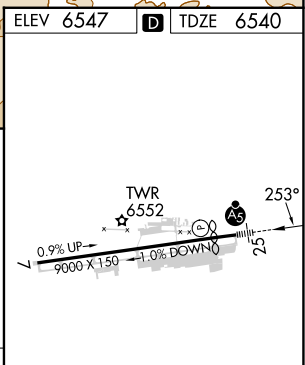
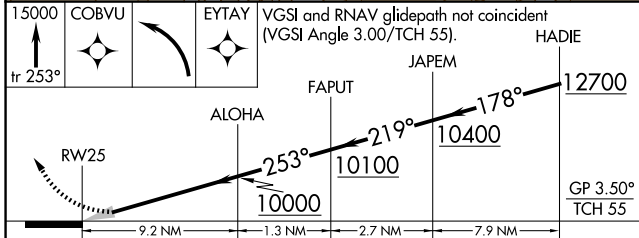


MISSED APPROACH: (Do not exceed 185K until HARNA) Climb to 15000 on the RNAV missed approach route to JESIE and hold.
*Missed approach requires minimum climb of 281 feet per NM to 9000.

ATIS	DENVER CENTER	EAGLE TOWER *	GND CON	CLNC DEL	DENVER CLNC DEL
135.575	128.65 282.2	119.8 (CTAF) Ⓛ	121.8	124.75	124.75 (When tower closed)



ELEV 6547	D	TDZE 6540
-----------	----------	-----------



CATEGORY	A	B	C	D
RNP 0.11 DA*	NA		6814-½	274 (300-½)
RNP 0.11 DA	NA		7181-1⅓	641 (700-1⅓)

AUTHORIZATION REQUIRED

HIRL Rwy 7-25 Ⓛ
REIL Rwy 7 Ⓛ

SW-1, 23 JAN 2025 to 20 FEB 2025

SW-1, 23 JAN 2025 to 20 FEB 2025